

# **Penpower RF Jr. User Manual**

Version: V7.1

Release: November, 2009

# Penpower Technology Ltd.,

## Software User License Agreement

You are licensed to legally use this software program (“the Software”) by Penpower Technology Ltd (“Penpower”) under this license agreement (“The Agreement”). If you do not agree with any of the provisions in this Agreement, please do not install, copy or use the Software. By using the Software, you are deemed to fully understand and accept the provisions of this Agreement.

### **1. Intellectual Property**

All intellectual property rights in the Software, together with all information and documents included in the packaging for the Software (including but not limited to copyrights), are property of Penpower, and are protected by relevant laws and regulations.

### **2. License to Use**

You are authorized to use the Software on one (1) single computer only. You may not use the Software on any other machines other than the said single computer.

### **3. Authority to Copy**

The Software and all documents included with the Software, and copyright thereof, are property of Penpower. You are licensed to make one (1) copy of the Software for your personal backup purposes. All other acts of copying are strictly prohibited.

You may not sell, lease, disassemble, reverse engineer, copy, translate, adapt or derive the Software, or obtain the source code of the Software by any other means. You may not use the Software for any purposes other than those permitted under this Agreement.

### **4. Business Users**

If you need to install or use the Software on more than one (1) computer, please contact Penpower or our local distributor to purchase a license for the additional use.

### **5. Liability**

You agree to indemnify Penpower against all losses, costs, debts, settlement payments or other expenses (including but not limited to attorneys fees) arising from your breach of this Agreement, and you agree to compensate Penpower for all of the abovementioned damages.

## **6. No Warranty**

Effectiveness of a packaged software in handling information is closely related to its software and hardware environment. The Software is published following careful development and product testing by Penpower, but Penpower is not able to conduct tests based on all possible combinations of software and hardware environment. Therefore, Penpower is unable to promise nor warrant that there will be absolutely no risk of loss or damage of information, or any other kind of loss, during installation and/or execution of the Software. You must be fully aware of your risks in using the Software.

Penpower will provide you with the Software and support services in respect of the Software to the maximum extent permitted by law. However, Penpower does not warrant that the Software and information included in the package of the Software contain no defects or errors. Penpower is not liable for any indirect, special or incidental loss arising from the Software, including but not limited to loss of profits, damage to business reputation, cessation of work, hardware malfunction or damage, or any other commercial damage or loss arising from commercial use of the Software.

## **7. Limitation of Liability and Damages**

The maximum amount of compensation payable by Penpower, in respect of any damage incurred by you for any reason under this Agreement, is limited to the amount you have already paid to Penpower in respect of the Software.

Under no circumstances will Penpower be held liable for the possibility of loss, notwithstanding Penpower may be aware of the possibility of such loss.

## **8. Prohibition Against Sublicense**

You are prohibited to assign the license in respect of the Software granted to you under this Agreement, or to grant a sublicense to another person.

## **9. Jurisdiction**

With regards to any disputes arising from this Agreement, Penpower and you agree that the court having jurisdiction over the business location of Penpower will be the court in the first instance.

## **10. Miscellaneous**

In the event that any provision of this Agreement is found to be invalid at law, such invalidity will not affect the validity of any other provisions, or the legal enforceability of such other provisions.

In the event that the Software cannot be executed under conditions of normal use, due to any damage to the original disk/s, Penpower will replace the disk/s free of charge.

# Contents

<b>Chapter 1 Product Overview .....</b>	<b>1-1</b>
1.1 Hardware .....	1-1
1.1.1 Hardware Specification.....	1-1
1.1.2 Hardware Functions.....	1-1
1.2 Features .....	1-3
<b>Chapter 2 Installation.....</b>	<b>2-1</b>
2.1 System Requirement.....	2-1
2.2 Software Installation.....	2-1
2.3 Hardware Installation .....	2-8
2.4 Getting Started.....	2-8
<b>Chapter 3 Hardware Operation .....</b>	<b>3-1</b>
3.1 Calibration .....	3-1
3.2 RF Jr. Pad Operation .....	3-2
<b>Chapter 4 New Pen/Mouse Mode .....</b>	<b>4-1</b>
4.1 Run Penpower RF Jr. Handwriting System.....	4-1
4.2 Switching Modes.....	4-2
4.3 New Pen/Mouse Mode .....	4-3
4.3.1 New Pen Mode Toolbar .....	4-3
4.3.2 Full Screen Handwriting Mode.....	4-5
4.3.3 How to Write.....	4-6
4.3.4 Correction, Phrases and Symbols .....	4-7
4.4 Balloon UI.....	4-8
4.4.1 Phrase Correction .....	4-9
4.4.2 Artificial Intelligence .....	4-10
4.4.3 Split.....	4-12

4.4.4 Merge .....	4-13
4.4.5 Homophone.....	4-14
4.4.6 Related Character.....	4-15
4.5 New Mouse Mode .....	4-16
4.5.1 Artificial Intelligence .....	4-16
4.5.2 Learning String .....	4-16
4.5.3 Update Phrase Database.....	4-19
4.5.4 Signature .....	4-21
4.5.5 On-Line Translator.....	4-23
4.5.6 Input Characters by Related Phrase.....	4-25
4.6 Settings .....	4-26
4.6.1 Recognition Setting.....	4-26
4.6.2 General Setting .....	4-28
4.6.3 Writing Setting.....	4-29
4.7 Writing Application .....	4-30
4.7.1 Switch Version.....	4-30
4.7.2 Gesture.....	4-31
4.7.3 Mix Traditional and Simplified Writing .....	4-31
4.7.4 Using Penpower RF Jr. in MSN Messenger .....	4-32
4.8 Presenter Mode.....	4-34
<b>Chapter 5 Traditional Mode .....</b>	<b>5-1</b>
5.1 Run Penpower RF Jr. Handwriting System.....	5-1
5.2 Writing Mode .....	5-1
5.3 Full Screen Mode .....	5-2
5.3.1 Balloon UI.....	5-2
5.4 Writing Pad Mode .....	5-3

5.4.1 Writing Tool .....	5-3
5.4.2 Phonetic Tool .....	5-4
5.4.3 Keyboard Input Tool .....	5-4
5.4.4 Dictionary Input Tool.....	5-5
5.4.5 Symbol Input Tool .....	5-5
5.5 Phrase .....	5-6
5.5.1 Input Phrases.....	5-6
5.5.2 Update Phrase Database.....	5-7
5.6 Other Functions .....	5-8
5.6.1 Learning Tool.....	5-8
5.6.2 Signature .....	5-8
5.6.3 On-Line Translator.....	5-8
5.6.4 Settings.....	5-9
5.6.5 Switch Version .....	5-10
5.6.6 Gesture.....	5-10
5.6.7 Mix Traditional and Simplified Writing .....	5-10
5.6.8 Using Penpower RF Jr. in MSN Messenger .....	5-10
5.7 Presenter Mode.....	5-10
<b>Chapter 6 Assistant Tools .....</b>	<b>6-1</b>
6.1 Penpower VoiceReader.....	6-2
6.1.1 Use Penpower VoiceReader .....	6-2
6.1.2 Reading Setting.....	6-3
6.2 Penpower Translator.....	6-4
6.2.1 English Words.....	6-4
6.2.2 Chinese Characters .....	6-5
6.2.3 English Chinese Article Translator .....	6-6

6.2.4 Chinese English Article Translator .....	6-6
6.3 Penpower Input Tool .....	6-9
6.3.1 Phonetic Input Tool.....	6-9
6.3.2 Keyboard Input Tool .....	6-10
6.3.3 Dictionary Input Tool.....	6-11
6.3.4 Symbol Input Tool .....	6-11
<b>Chapter 7 Fast User Switching .....</b>	<b>7-1</b>

The software application may have a newer version at the time when this product was being manufactured and/or packaged. If the content on your application screen differs from your User Manual, please follow the latest application screen upon installation.

# Chapter 1 Product Overview

## 1.1 Hardware

### 1.1.1 Hardware Specification

- \* Dimensions(mm): 98(length) x 60(width) x 10(height)
- \* Weight: 56g
- \* Active Pad Area(mm): 57(length) x 43(width)
- \* Transmission Distance: 3m
- \* Continuous Battery Consumption: 8 hrs/battery

### 1.1.2 Hardware Functions







1. Left mouse button: In the Handwriting mode, it works as a candidate switch. Click it, the recognized character will be change to next candidate. In the Presentation mode, click it to show next page.
2. Right mouse button: In the Handwriting mode, click it to input a punctuation symbol. Click it again to change to another punctuation symbol. In the Presentation mode, click it to show previous page.
3. Pen/Mouse mode button: In New Pen mode or Mouse mode, click it to switch between two modes. In the Traditional mode, click it to switch between Full Screen mode and Writing Pad mode. In the Presentation mode, it does not have any function.

## 1.2 Features

### **Unicode recognition kernel**

Support unicode system to input Traditional and Simplified Chinese easily.

### **All in one recognition kernel of Big5 and GB**

The character set can be recognized including more than 23000 Chinese words, 4818 HongKong words, alphabet, numeric, symbol, Hiragana, and Katakana.

### **Artificial Intelligence recognition kernel**

After you correct the recognition result from candidate or AI dialog, the system will modify its recognition database to adapt your personal writing style. This would improve the recognition rate for yourself.

### **Full screen multi-words free writing**

It is allowed to handwrite multiple words before recognition at one time based on the advanced character segmentation technology.

### **Balloon UI**

The visual user interface is hidden transparently. The function tool bar will be popped up on the word where the cursor is.

### **Free writing recognition kernel**

Not only the stroke order is free, but even though the careless or illegible continuous free writing could be recognized correctly.



### **Smart Handwriting/Mouse Mode**

This brand new Penpower mouse is more intuitive and easier to use. Additional symbols and symbol shortcuts are also provided for your convenience.

### **Other auxiliary function**

provide many usefully functions, such as related phrase, related character, special symbol table, homophone, dictionary, learning string, color inking and sound effect...etc, to make input easier.

### **Word Learning Wizard**

All new word learning wizard mode making it easy to set up and manage learning dictionary.

### **Chinese-English Translation**

Online dictionary with real-time translation between Chinese and English with 139,000 English to Chinese and 76,000 Chinese to English entries.

### **Transparent signature**

Directly super-impose your signature at the desired area in a Word or Excel document without disrupting the document layout. Or insert your signature into Outlook, Netscape and Eudora e-mails and send it to other people.

### **Inking on MSN Messenger**

If you have MSN Messenger 6.1 or above installed, you will be able to transmit handwriting and hand-drawn graphics through MSN Messenger for that extra personal touch.

### **Fast User Switching**

Windows fast user switching.

# Chapter 2 Installation

## 2.1 System Requirement

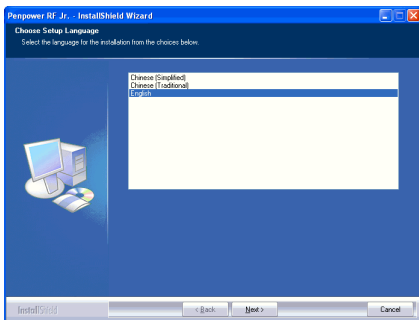
1. Intel Pentium processor or compatible
2. 128MB RAM
3. 150MB disk space
4. Windows 7/Vista/XP/2000
5. USB Port

## 2.2 Software Installation

1. Please insert CD-ROM disc into the CD-ROM drive and the system will automatically launch setup.exe. Select “Setup Penpower RF Jr.”.



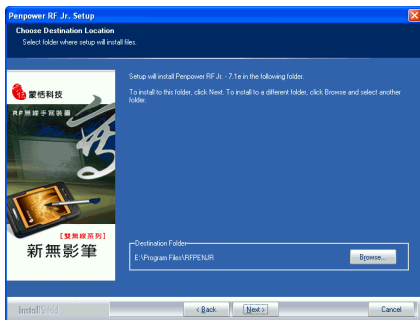
2. Please close all Penpower applications to ensure that the install/repair process will run properly. Select the installation language and then click “Next”.



3. Click “Next” to continue.



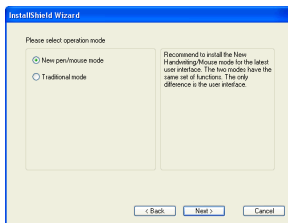
## 4. Choose the destination location and click “Next”.



## 5. Select the setup type.



6. Penpower Jr. offers two handwriting modes: Traditional and New pen/Mouse. We recommend that you choose the New pen/Mouse mode. If you are an existing Penpower Jr. user and prefer to use the Traditional mode then you may choose the Traditional mode instead. Both modes have the same functions, the only difference between them is the interface.



7. If you select “Custom” setup type in the step 5, you will see the window below. you can check every single function to install, except the functions in grey color.



8. Select a program folder and click “Next”.



9. Select the user interface language of Penpower RF Jr. and click “Next”.





10. Click “Automatically load Penpower RF Jr.” if you wish to load it automatically when the Windows starts. And then click “Next”.



11. Click “Finish” to finish to installation.



12. Penpower RF Jr. offers various Chinese fonts. You can install DYNA Fonts from the main installation menu. Select the fonts you desire to install, then follow the instruction to install.

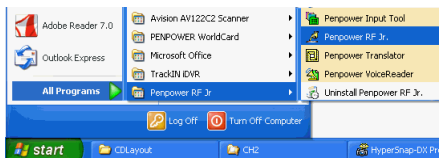


## 2.3 Hardware Installation

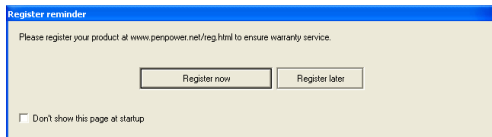
1. Connect the RF dongle to the USB port of your computer.
2. Put a battery in the RF Jr. pad.



## 2.4 Getting Started

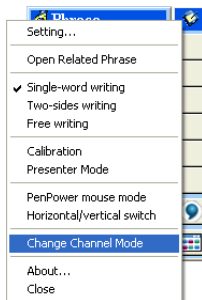
1. Switch on the RF Jr. pad.
2. Run “Start/All Programs/Penpower RF Jr/Penpower RF Jr.”



3. When running Penpower RF Jr. for the first time, a register reminder window will remind you to register your product at [www.penpower.net/reg.html](http://www.penpower.net/reg.html) for ensuring the warranty service. Click “Register now” to register. If you click “Register later”, you may go to “About/Register” when you are ready.

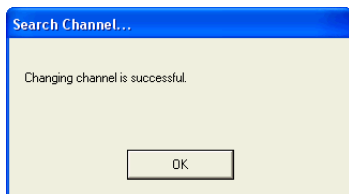


4. When first time running Pen-power RF Jr., please click on the “Menu“  button or right click  from the toolbar, and select “Change Channel Mode“ to search channel.



**Note:** *If the Calibration window pops up, please close it and run Change Channel Mode first. Refer to section 3.1 to calibrate the RF Jr. pad after the changing channel is done.*

5. Please press the right and left button of the RF Jr. pad together until changing channel is successful.




**Tip:** *If the battery is low, the system will pop up a warning message to inform you changing the battery.*



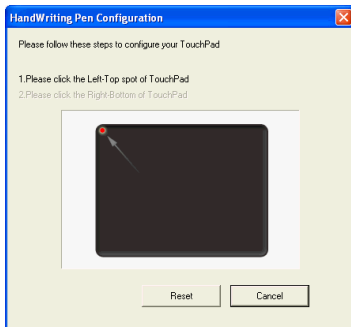
## Chapter 3 Hardware Operation

### 3.1 Calibration

After changing channel, you should be able to hand write right away. If you found that the inking you wrote is not centered on screen, you need to calibrate your Penpower RF Jr. pad to remap the active area.

1. Click Penpower RF Jr. icon  and select **Calibration** from the menu.
2. Please click on the top-left corner spot of the Penpower RF Jr. pad and then click on the bottom-right corner spot of the Penpower RF Jr. pad.

*Tip : After calibration, the new configuration will take effect immediately. You do not need reboot or reload Penpower RF Jr. handwriting system.*





## 3.2 RF Jr. Pad Operation

1. Moving: Put the pen on the RF Jr. pad, and then move it on the panel gently.

2. Click: Hit the RF Jr. pad once.



3. Dragging: Hit the RF Jr. pad twice quickly, and move the pen on the pad after second pen down.



4. Double click: Hit the RF Jr. pad twice quickly.



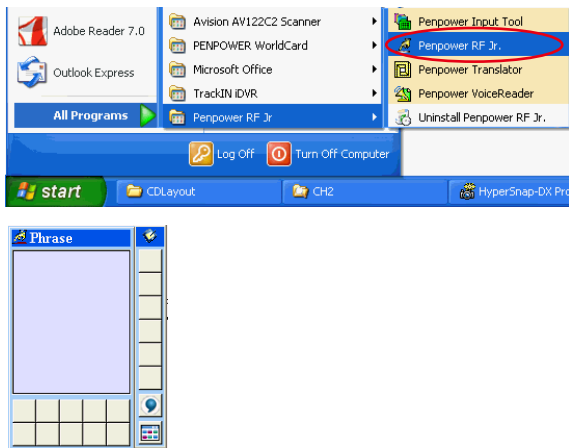
5. Buttons: There are three buttons in the RF Jr. pad which accord with the three buttons of the mouse.

- The middle mouse button is the Handwriting/Mouse mode switch. Click it can switch to Handwriting mode.
- In the Handwriting mode, click Left mouse button, the recognized character will be change to next candidate. Click Right mouse button to input a punctuation symbol. Click it again to change to another punctuation symbol such as ‘ ’ ° ` : ; ? .
- In the Presentation Mode, click Left mouse button to show next page. Click Right mouse button to show previous page. The middle mouse button does not have any function.

## Chapter 4 New Pen/Mouse Mode

### 4.1 Run Penpower RF Jr. Handwriting System

If you installed “New Pen/Mouse Mode“ and run “Start/All Programs/ Penpower RF Jr./Penpower RF Jr.”, you will see the New Pen window as following:








## 4.2 Switching Modes

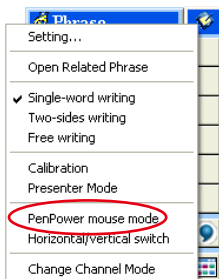
Penpower RF Jr. has the New Pen and New Mouse modes. The New Pen mode provides writing and recognition functions. You can select the candidates, related characters, phrases and symbols via mouse.

In New Mouse mode, you can use the RF Jr. pad and pen as the mouse to select the candidates, related characters, phrases and symbols. It also provides handwriting inking review, and some function buttons such as AI, learning tool, phrase, signature and on-line translator.

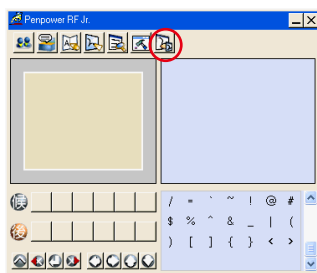
When Penpower RF Jr. is launched for the first time it will start in the New Pen mode. Left mouse click on the “Menu” button  or right mouse click on the toolbar  to open the options menu. Select “Penpower mouse mode” to switch to the New Mouse mode.

In New Mouse mode, click on the “Switch” button  to switch back to the Pen mode.

***Tip: The middle function button on the Penpower RF Jr. pad allows fast switching between the New Pen and New Mouse modes.***



**New Pen mode**







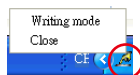
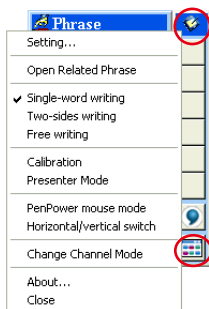
**New Mouse mode**


## 4.3 New Pen/Mouse Mode

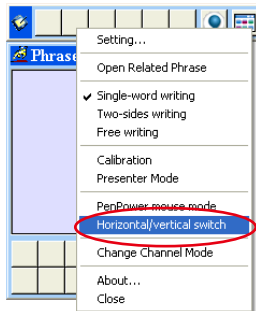
Penpower RF Jr. has the New Pen and New Mouse modes. The following will explain the New Pen mode and the Balloon UI.

### 4.3.1 New Pen Mode Toolbar

When run Penpower RF Jr., the vertical New Pen mode toolbar will appear. You can write characters on the RF Jr. pad to input characters. Right click the mouse on the  or click menu  to open the menu. Double click  to close the Handwriting toolbar temporarily. Click  tray icon from the taskbar and select “Writing mode” to open the New Pen mode toolbar.

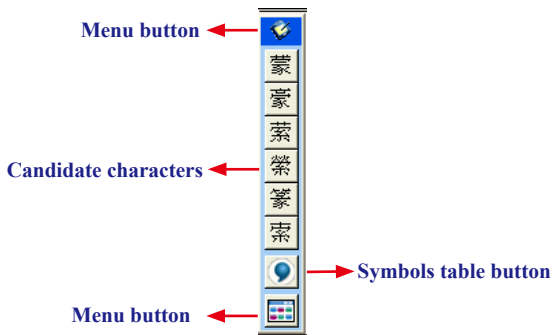


The New Pen mode provides vertical and horizontal layout of the toolbar. Click ‘menu’ button  to select the layout of the toolbar.



The candidate area of the Pen mode provides you to promptly correct the recognized characters, for example when you wrote ‘蒙’, and it recognized to ‘豪’, you can select ‘蒙’ from the candidate area via the mouse.

Click the symbols table button  via the mouse to open the symbols table and enter the corresponding punctuation symbol.



## 4.3.2 Full Screen Handwriting Mode

There are three different options of full screen mode in the main menu.

### Single-word writing

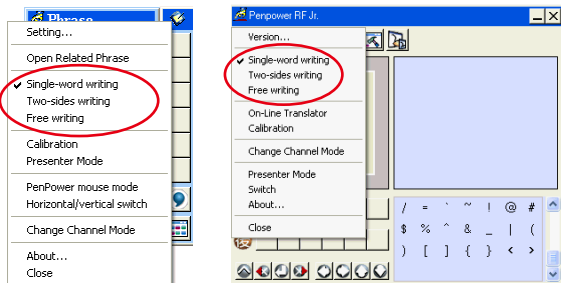
It allows handwriting one character only at one time, handwrite the next character when the recognition result of current character is finished.

### Two-sides writing

After the first stroke is written, one vertical line would be displayed on the center of screen. All the strokes written on the same side would be considered as part of one character. When a new stroke is crossed to the other side, it means that the last character is finished and you have started writing the next character.

### Free writing

You can handwrite up to forty one characters before recognition at one time. It permits left-to-right, or top-to-bottom free writing order. Remember to keep adequate distance between two contiguous characters when you write. It affects the result of character segmentation.





### 4.3.3 How to Write

On Free writing mode, it's better to keep strokes of the same character closed, and keep not to overlap between characters when you write. You need to finish writing every strokes of one character.

#### Right example

Write three characters of 『明日月』.



#### Wrong example 1

Overlap between two characters. All the strokes may be recognized as one character.



#### Wrong example 2


The two parts of one character are written far away from each other. All the strokes may be segmented into two characters.



#### Auto Phrase Correction

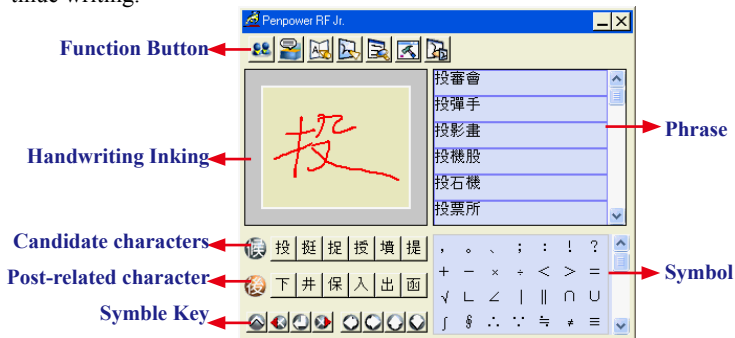
The system automatically proofreads on your writing content to improve the recognition rate. For example, when you continuously write 『天下太平』 (peace on the earth) four characters, but the character 『天』 is incorrectly written as 『夫』, so they become 『夫下太平』. Penpower uses its internal phrase dictionary to correctly recognize your intended result 『天下太平』.

### 4.3.4 Correction, Phrases and Symbols

When writing, the candidate characters based on the previous input will be displayed on the Writing toolbar. Each press of the left mouse button on the RF Jr. pad will move the candidate characters forward by one and also correct the results. The right mouse button allows the input of six habitual symbols. Alternatively, select a candidate character on the Writing toolbar to correct it. Press the symbol table  button with the mouse to open the symbol table and enter the corresponding punctuation symbol.

You can also press the middle mouse button on the RF Jr. pad to switch to the New Mouse mode. In New Mouse mode, select the candidate character, post-related character, phrase or select symbol input.

For example: In handwriting mode, the input 『蒙恬科技』 had the character 『技』 misread as 『投』. Here you can press the middle function button on the RF Jr. pad to switch to the mouse mode then choose from the candidate characters field 『技』 to correct the mistake. Once fixed, press the middle mouse button to switch back to the handwriting mode and continue writing.














## 4.4 Balloon UI

This unique user interface let you edit recognition result freely in any application. The visual user interface is hidden transparently. When you want to correct some characters, just move the cursor position on this character for a while. The function toolbar will be popped up there where the cursor is.

蒙恬气泡式介面




***Tip : You do not need to press any button after the cursor is moved on the character.***



In the function toolbar, click candidate characters, AI button , homophone , pre-related character , post-related character  or phrase correction  to correct the result. click  button to see the raw inking. Click  button to see the tutor. Click  button to input punctuation symbol. Click  button to split one character. Click  button to merge the character with next character. The  button is for the Chinese-English translation function. Details are provided further on.

***Note: In New Pen/Mouse mode the balloon interface functions can only be operated with the computer mouse.***

***Note: Balloon Interface can be used in Office, IE, WordPad, but on 64 bit system, it can not be used in 蒙恬 software, ext. note.***

### 4.4.1 Phrase Correction

In Full Screen mode if you wish to enter a common phrase such as an idiom, if you are not sure of how to write one of the characters you can substitute a similar sounding character instead. If you are not sure of the character's pronunciation either, choose any at random. When you have finished writing the phrase, select the uncertain character with the mouse then click on the phrase correction  button. The system will examine the four characters before or after this particular character to guess what you meant and make the change.

1. When entering an idiom in Full Screen mode such as 『拔苗助长』, if you are not sure of how to write the character 『拔』, you can enter the character 『一』 instead to input 『一苗助长』.
2. Move the mouse over the character 『一』 and pause for a moment to bring up the “Candidate Characters Window”. Click the phrase correction button  and the 『一』 character will be changed to 『拔』.
3. If the phrase correction function came up with multiple candidate characters, these will be shown in the candidate characters window for you to choose from. For example, if the input was 『股份一限公司』 when you pause the mouse cursor over the 『一』 character, this will bring up the “Candidate Characters Window”. Pressing the phrase correction button  will bring up a list of all phrase correction candidate characters for you to choose and make the correction with.

一苗助长

一苗助长



拔苗助长

股份一限公司








## 4.4.2 Artificial Intelligence

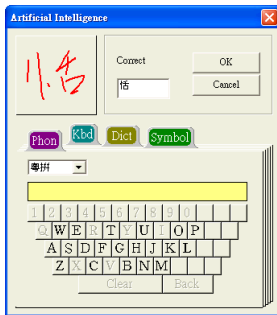
When you use candidate character or AI button to correct result, the system will modify its recognition database to adapt your personal writing style. The may improve the recognition rate.

1. Handwrite some characters. The result would be sent in the caret.
2. e.g. 『恬』 is wrongly recognized as 『恰』.


蒙恰科技

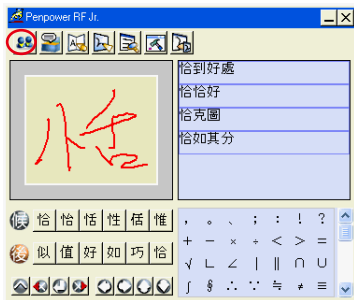
3. Move the cursor on the character 『恰』 for a while to pop up the function tool bar.
4. Click the candidate character if the correct character is there.
5. Otherwise click the AI button  to open the AI correction dialog.
6. Input the correct character 『恬』, and then click “OK”.
7. You will see the wrong result 『恰』 is already updated as 『恬』. Your personal writing style of inking has also been learned.

蒙恰科技



蒙恬科技


*Tip: You can also press the RF Jr. pad's middle button to switch to the mouse mode. If the correct character appears among the candidate characters, simply click on it to make the change. If the correct character is not among the candidate characters, press the "Penpower AI"  button to open the AI dialogue field to train the software.*





### 4.4.3 Split

When two characters are written too close, they may be recognized as single character. You can use split function to separate it into two characters.

1. Handwrite four characters 『日月星辰』 by free writing. The result would be sent in the caret.
2. If 『日』 and 『月』 is written too close, you may wrongly get three characters of result 『明星辰』.
3. Move the cursor on the character 『明』 for a while to pop up the function tool bar.
4. Click  button to separate 『明』 into 『日』 and 『月』.

明星辰

明星辰|


明星辰



日月星辰|

### 4.4.4 Merge

When some strokes of one character are written far away from each other, they may be recognized as several characters. You can use merge function to combined them into one character.

1. Handwrite two characters 『栋梁』 by free writing. The result would be sent in the caret.
2. If 『木』 and 『东』 is written far away from each other, you may wrongly get three characters of result 『木东梁』.
3. Move the cursor on the first character 『木』 for a while to pop up the function tool bar.
4. Click  button to merge 『木』 and 『东』 into 『栋』.



木东梁 ←

木东梁




栋梁 ←

*Note : Only two continuous characters could be merged at one time.*






### 4.4.5 Homophone

If you forget how to write some characters, or they are too complicated to write, you can write down some other easy homophones to get the characters that you would like to input. e.g. If you want to input the character 『豫』:

1. Write any one homophone of 『豫』, e.g. 『玉』. The result would be sent in the caret.
2. Move the cursor on the first character 『玉』 for a while to pop up the function toolbar.
3. Click  button to open the window of homophone characters.



4. You can click  /  /  button to toggle other Zhu yin, Yue pin or Han pin homophones.
5. Click 『豫』 to replace 『玉』.

豫

## 4.4.6 Related Character


For any two contiguous characters, the first one is the pre-related character of the second one. The second one is the post-related character of the first one.

e.g. 『科技』, 『科』 is the pre-related character of 『技』, and 『技』 is the post-related character of 『科』.

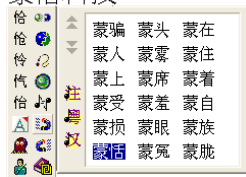
1. Handwrite some characters. The result would be sent in the caret e.g. 『恬』 is wrongly recognized as 『恰』, and 『科』 is wrongly recognized as 『料』.




2. Move the cursor on the character 『恰』 for a while to pop up the function tool bar.

蒙恰料技

3. Click  button to open the window of pre-related phrases. If the correct phrase 『蒙恬』 is in the list, click it to update the result.


蒙恰料技



4. Move the cursor on the character 『料』 for a while to pop up the function toolbar. You can click  /  /  button to toggle other Zhu yin, Yue pin or Han pin related characters.

蒙恰料技



5. Click  button to open the window of post-related phrases. If the correct phrase 『科技』 is in the list, click it to update the result.


6. You will see the wrong result 『蒙恰料技』 is already updated as 『蒙恬科技』 at last.

蒙恬科技

## 4.5 New Mouse Mode

The following will introduce the function buttons of New Mouse mode, such as Artificial Intelligence, Learning Tool, Phrase, Signature, On-line Translator and Settings.

### 4.5.1 Artificial Intelligence

When writing a character in the New Pen mode, you can push the middle button for switching to the Mouse mode. You can click [Artificial Intelligence function]  to adapt your personal writing style. Please refer to 4.4.2 for details.

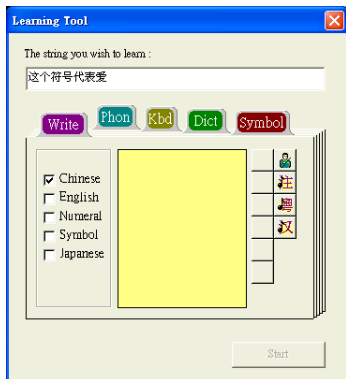
### 4.5.2 Learning String

A string is represented by an inking of symbol. So, you can handwrite the symbol anytime and the recognition engine will recognize it as the expanded string. It prevents you from redundant writing.

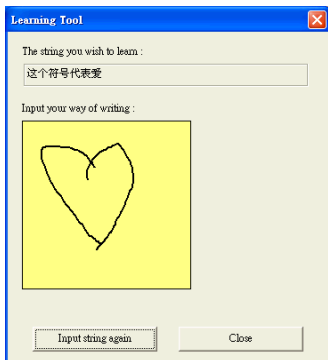
1. In Mouse mode, press the “Learning Tool” button to open the Learning Tool Window. Select “Learn String” to open the “Learning Tool” screen.



2. Input the string you want to learn, then click on “Start”.

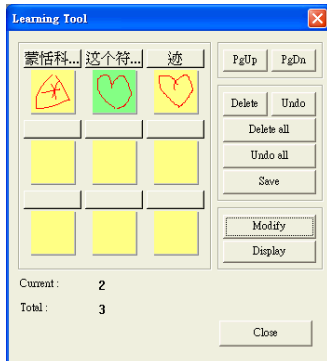
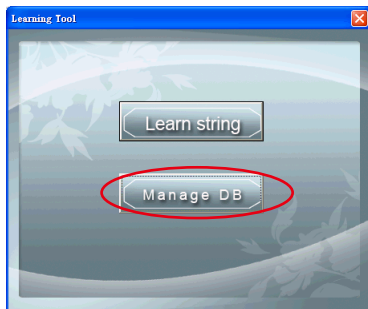


3. Write down your inking twice according to the hint.






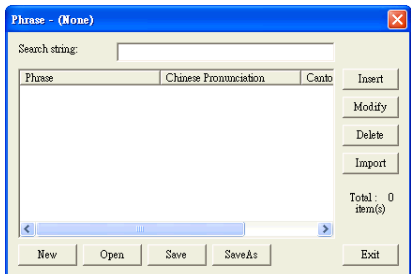
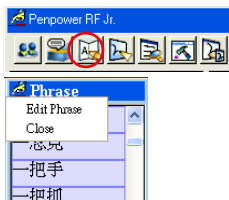
4. Click “Manage DB” tag, You can browse the dynamical inking or modify the string you have ever learned here.



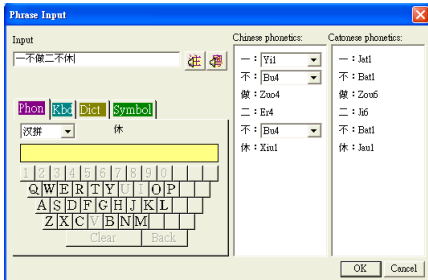
### 4.5.3 Update Phrase Database

There are thousands upon thousands default phrases that you can use in the Penpower handwriting recognition. It also allows you to customize the phrase database to meet your needs.



1. In Mouse mode press the “Phrase” button . Or in Handwriting mode select “Edit Phrase” from the Associations Dictionary and open the “phrase” dialogue.



2. Click “insert” to open the “Phrase Input” dialog. You can input a new phrase here. e.g. If you want to insert 『一不做二不休』 as a phrase, in put 『一不做二不休』.





You need to update the phonetics on the right side. Click  /  button to hear their pronunciation and check if the one you choose is right.

***Note : The maximum length of one phrase is 200 characters. In fact, the phonetics is only for VoiceReader to read text with right sound of phonetics. If you do not care, you can skip it.***

Click “OK” to finish insertion. Afterward, if you write 『一』, then 『一不做二不休』 would be displayed in the related phrase window. Just click it to input.

3. Select one phrase from the list, and then click “Modify” to update the phonetics of this phrase. Click “Delete” to delete this phrase from database.
4. In “Search string” field, you can only input part of a phrase to find this phrase quickly.
5. You can use “New”, “Open”, “Save”, “Save As” function to manage your phrase database (\*.yib).

***Note: Although you can create several phrase database, you can only choose one at one time.***

#### 6. Import file

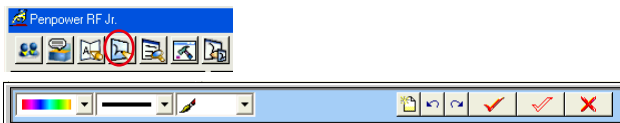
Click “Import” and select one phrase database (\*.yib) or text file to import it into current database.

The text file format must follow this rule - one phrase in each line. You can edit it by any editor, e.g. Note Pad.

***Note: Every imported phrase would own phonetics by default. Their phonetics may be wrong. You can modify them from phrase dialog.***

## 4.5.4 Signature

1. Move the caret to where the signature will be.
2. Open the Mouse mode and press the “Signature” button. The “Welcome to Penpower Signature Tool” screen will be shown and you are now in the signature mode.



3. In signature mode, the right button is defined to toggle Pen mode and Mouse mode. You must switch to Pen mode before start to sign your signature. The left button is defined to change color.



: Change the color of inking.



: Change the thickness of inking.



: There three kind of pen style to change.



: Clear all.




: Undo one stroke.

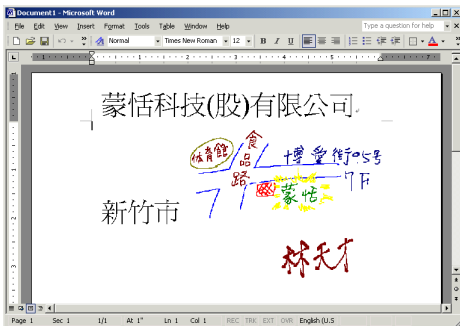



: redo one stroke.

4. Click  button to cancel signature.

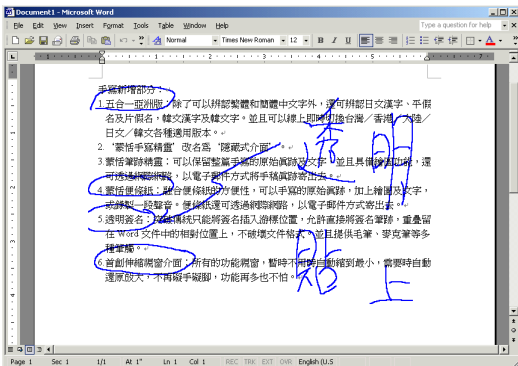


5. Click  button to insert your signature in the caret.



6. Click  button to overlap your transparent signature with MS Word or MS Excel document.

**Note:** You can use the transparent signature in the latest MS Word and Excel, but MS Office 2007 not support this function. You may make notes and commentary by using transparent signature function.

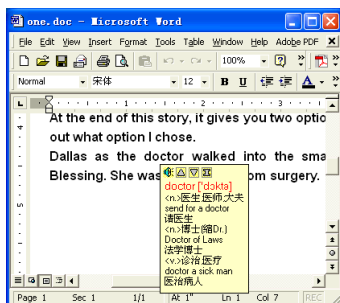
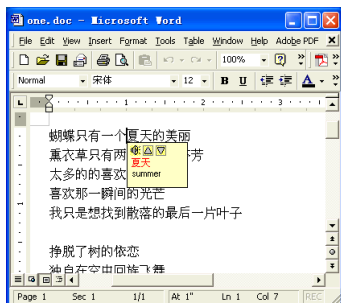






## 4.5.5 On-Line Translator

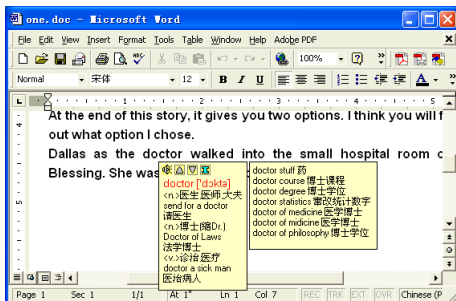
1. Open the Mouse mode and press the “On-Line Translator” button to open the On-Line Translator function. Press the button again to close the function.




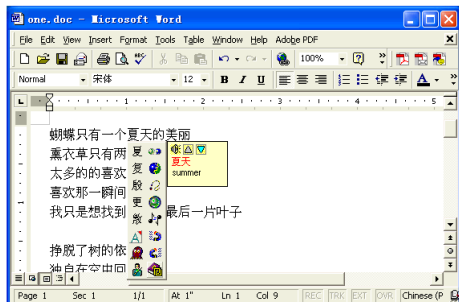
When reading English or Chinese articles, if you encounter unknown characters or phrases, move the cursor over the characters, and a translation window pops up to explain them for you.



When you move the cursor outside the interactive scope, the window will disappear. In the window, you can press the play  button or character  /  or phrase explanation  buttons.



The online translation is used in the balloon interface. When you want to look up a character's translation, select  button from the candidate window.



## 4.5.6 Input Characters by Related Phrase

Phrase function provides the related phrases for inputting phrases quickly.

1. Write down the first character of one phrase. e.g. If you want to input the phrase 『一年四季』, just write the first character 『一』.
2. Press the middle button on the PF Jr. pad to switch to the Mouse mode. All the phrases beginning with this character 『一』 will be listed on the phrase area of the Mouse mode.
3. Click the phrase or memorized character that you want to send it into the caret. e.g. 『一年四季』.

一 |

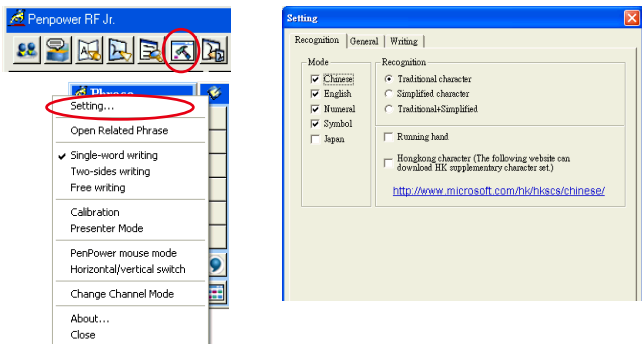


一年四季



## 4.6 Settings

In New Mouse mode click on the “Settings” button or in New Pen mode choose the “Setting...” from the menu to open the Settings page. You can set the recognition mode, output character or writing inkings here.



### 4.6.1 Recognition Setting

#### Mode

The recognition mode of Chinese, English, Numeral, Symbol and Japanese could be turned on/off individually. You could turn on several modes at the same time.

#### Recognition

1. Traditional character: All the results are recognized to traditional Chinese characters.
2. Simplified character: All the results are recognized to simplified Chinese characters.

3. Traditional+Simplified: Get traditional Chinese characters when using traditional writing, and get simplified Chinese characters when using simplified writing.

### Unusual character

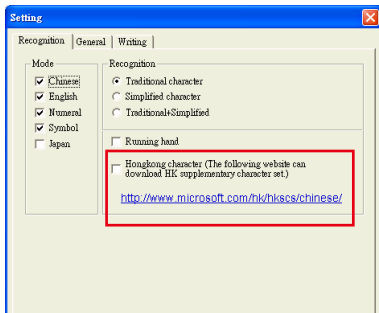
In the GBK (Simplified Chinese) version, the system will recognize some unusual characters only when you check the “Unusual character” option.

### Running Hand

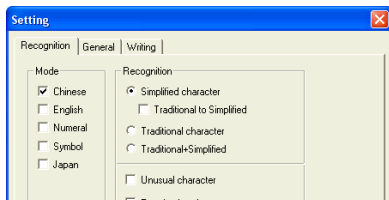
Check this option to have the software recognize run-on cursive.

### Hongkong Character

This recognition mode is only available when the Penpower RF Jr. is set to the Traditional Chinese or Traditional Chinese (Hongkong) recognition. You can connect to <http://www.microsoft.com/hk/hkscs/chinese/> to check the Hongkong characters list.



*Notes: When you switch to the GBK (Simplified Chinese) version, you will see “Traditional to Simplified” option. Check it to recongize traditional writing to simplified characters.*



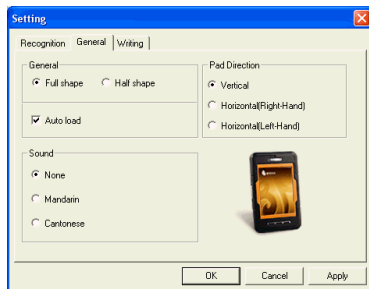
## 4.6.2 General Setting

### Half Shape/Full Shape

To decide whether the handwriting result of alphanumeric is recognized as one-byte ASCII code or double-bytes code.

### Auto Load

Auto execute Penpower RF Jr. handwriting system when the Windows starts.



### Pad Direction

Set the orientation of the RF Jr. pad as Vertical, Horizontal (Right-Hand) or Horizontal (Left-Hand).

### Sound

Pronounce the character in Mandarin or Cantonese after recognition.

### 4.6.3 Writing Setting

#### Ink Color

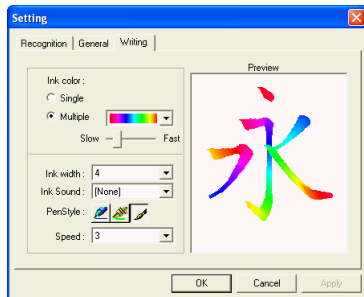
Change the color of inking. You can adjust the smoothness of color degree for “Multiple” option.

#### Ink Width

Change the thickness of inking.

#### Ink Sound

Change the sound effect while writing.



#### Pen Style

There three kind of pen style to choose.

#### Speed

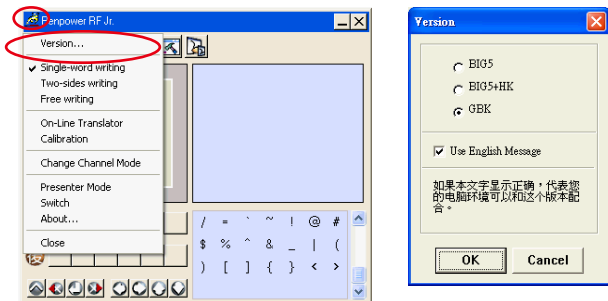
There are several levels of writing speed you can set. After you stop writing, the less the relative value is, the shorter the timeout waiting for recognition is.

## 4.7 Writing Application

The following will introduce the function of Writing Application, such as Switch Version, Gesture, Mix Traditional and Simplified Writing, and Using Penpower RF Jr. in MSN Messenger.

### 4.7.1 Switch Version

1. In Mouse mode, right click on the Penpower RF Jr. options and then select “Version...” to open version options .



2. Select the BIG5 (Traditional Chinese), BIG5+HK (Traditional Chinese + Hong Kong characters) or GBK (Simplified Chinese). After switching version, if you can not see the message displayed correctly on the bottom, it means that your Windows system may not support this version you chose.
3. Check “Use English Message” option to display all the messages of Penpower RF Jr. handwriting system in English.

### 4.7.2 Gesture

Penpower RF Jr. handwriting system supports four standard inking gesture. You can handwriting these gestures to simulate keyboard input.

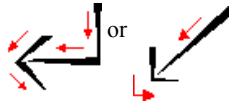
1. Delete : simulate DELETE key.



2. Backspace : simulate BACKSPACE key.



3. Enter : simulate ENTER key.



4. Space : simulate SPACE key.





### 4.7.3 Mix Traditional and Simplified Writing

You can mix writing traditional and simplified Chinese characters. e.g. Handwrite two characters 『書写』.

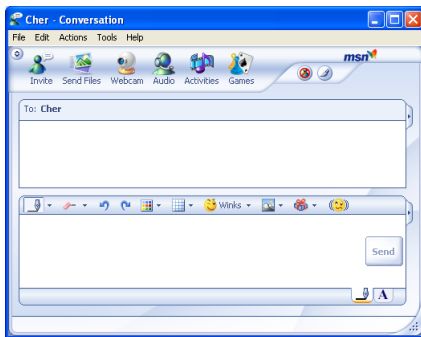


Whatever you wrote, choose different recognition engine to decide the results being traditional or simplified characters. Please see 4.6.1 for more details

## 4.7.4 Using Penpower RF Jr. in MSN Messenger

After you have logged in to the MSN Messenger v6.1 or higher version, double click on the person's name to begin the conversation box. Below this conversation box, there are two modes for you to select, including "Handwrite"  and "Type" . You can switch between the input modes as you like.

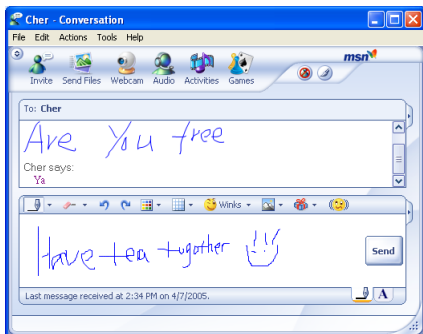
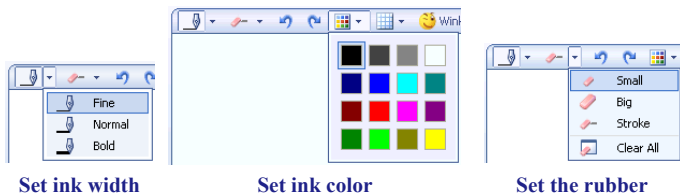
*Note: If you can't activate the handwriting mode, please visit the Microsoft website and install the necessary handwriting components.*



In the New Pen mode, you can select the font size and font color from the scroll bar menu. After the setting has been done, you can write on the tablet and the characters will appear as what you have previously set.



If you want to clear the characters you have written, you can select and use the eraser shown in the scroll bar.


After you have input your message, you can click on "send" to send your handwritten message.

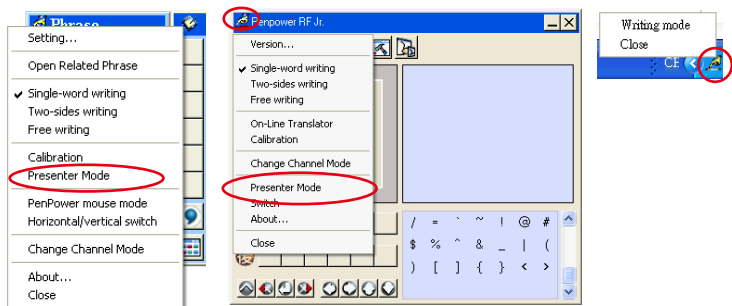




## 4.8 Presenter Mode

In the New Pen mode, click on the “Menu” button  or right click on the toolbar  to open the options menu. In the New Mouse mode, click the menu. Select “Presenter mode” to switch to the Presenter mode.

The Writing toolbar or Mouse pad will shrink to the taskbar. Click  tray icon from the taskbar and select “Writing mode” to switch to the New Pen mode.



In the Presenter mode, please turn the RF Jr. pad to 180° as the picture. Play the MS PowerPoint presentation file and press [Page Up] and [Page Down] to change pages.

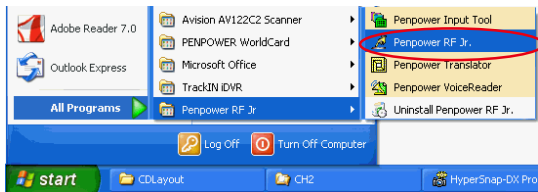
***Note: The Presenter mode does not support handwriting function, and the middle button does not have any function.***




# Chapter 5 Traditional Mode

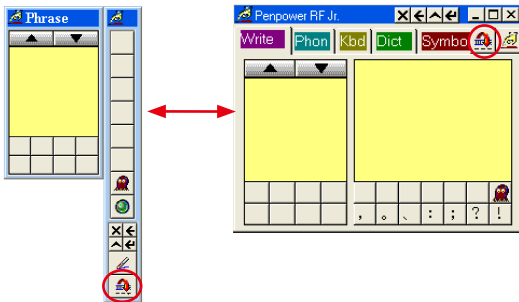
## 5.1 Run Penpower RF Jr. Handwriting System

If you installed “Traditional Mode“ and run “Start/All Programs/Penpower RF Jr/Penpower RF Jr.”, you will see the Traditional Handwriting window.



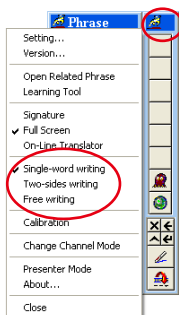
## 5.2 Writing Mode

There are two kind of writing modes. One is “Full Screen” mode, the other one is “Writing Pad” mode. You can click the  button to toggle these two writing mode.



## 5.3 Full Screen Mode

There are three different options of full screen mode in the main menu, Single-word writing, Two-sides writing and Free writing. Please see Chapter 4.3.3 for details.



### 5.3.1 Balloon UI

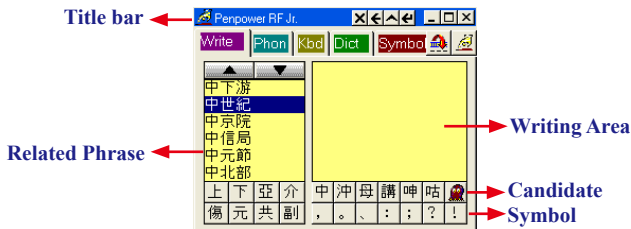
This unique user interface let you edit recognition result freely in any application. The visual user interface is hidden transparently.

When you want to correct some characters, just move the cursor position on this character for a while. The function tool bar will be popped up there where the cursor is. Please refer to Chapter 4.4 for details.

## 5.4 Writing Pad Mode

There are five input tools in Writing pad: Write, Phonetic, Keyboard, Dictionary and Symbol.


### 5.4.1 Writing Tool



You need to click the middle button or click on the writing area switching into pen mode before you start writing. The color of writing area will change from gray into yellow.

The left button would be revised for error correction on Pen mode. While you press the left button once each time, the latest recognized result would be replaced with the next candidate character. It lets you correct the result quickly without switching to Mouse mode.

Click the middle button or click on the writing area again to switch into mouse mode. The color of writing area will change from yellow into gray.

**Tip:** *The writing-pad adopts shrink-expand user interface. It would expand into normal size when the cursor move on it. Otherwise it will shrink as an small icon  to avoid occupying the screen.*

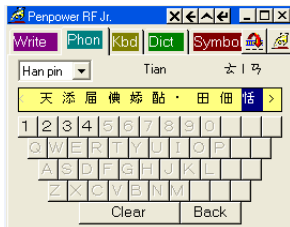


## 5.4.2 Phonetic Tool

There are three types of phonetic tool, Zhu yin, Cantonese and Han pin by default. You can create your own phonetic input tool.

### How to Use

1. Select one phonetic input tool of Zhu yin, Cantonese, Han pin or others.
2. Click the phonetic button one by one in order.
3. The converted candidate character would be listed in the text buffer.



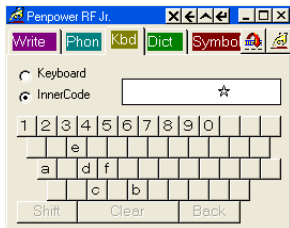
## 5.4.3 Keyboard Input Tool

### Keyboard

Simulated software keyboard.

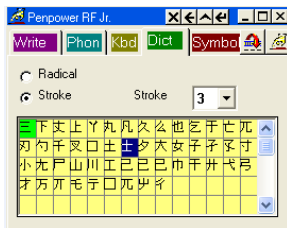
### Inner Code

For example, the inner code of [☆] in hexadecimal is a1b8. Click [a], [1], [b], [8] button one by one in order, and then get [☆].

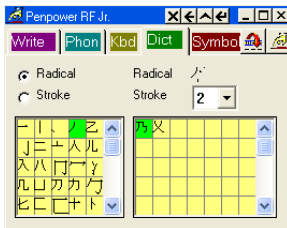


## 5.4.4 Dictionary Input Tool

### Query by stroke

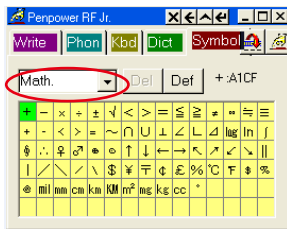


### Query by radical



## 5.4.5 Symbol Input Tool

The special symbols are grouped into multiple pages of table. Select the suitable table and click the symbol what you want to get. It allows you to customize the symbol tables.



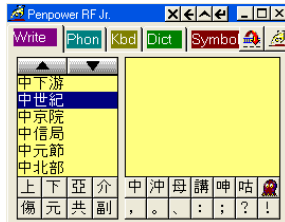


## 5.5 Phrase

### 5.5.1 Input Phrases

1. In both the Full Screen and Writing Pad modes the Associations dictionary window will always be displayed.

*Note: In Full Screen Handwriting mode, if the Associations dictionary is closed, select “Open Related Phrase” from the menu to reopen it.*



2. Write down the first character of one phrase. e.g. If you want to input the phrase 『一方面』, just write the first character 『一』.
3. All the phrases beginning with this character 『一』 will be listed on the top.
4. All the memorized characters you have ever written right following this character 『一』 will be listed on the bottom.
5. Click the phrase or memorized character that you want to send it into the caret. e.g. 『一方面』.

一

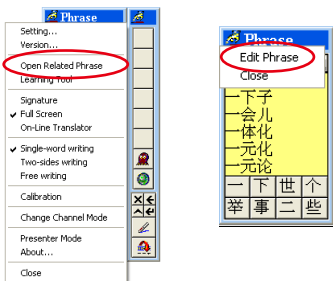


一方面

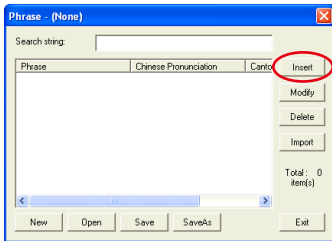
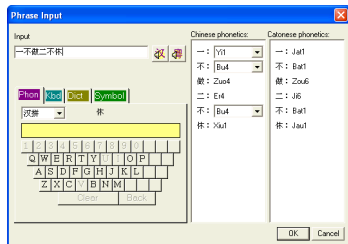
## 5.5.2 Update Phrase Database

There are thousands upon thousands default phrases that you can use in the Penpower handwriting recognition. It also allows you to customize the phrase database to meet your needs.

1. Open the Penpower RF Jr. main menu and select “Open Related Phrase”. Then select “Edit Phrase” from the Phrase menu to open the “Edit Phrase” dialog to edit the dictionary.



2. Click “Insert” to open the phrase input dialog. You can input a new phrase here. Please see Chapter 4.5.3 for details.

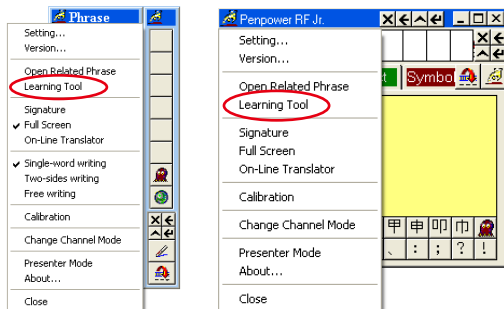




## 5.6 Other Functions

### 5.6.1 Learning Tool

Select the “Learning Tool” from the main menu to open the Learning Tool dialogue. Please see Chapter 4.5.2 for details.



### 5.6.2 Signature

Move the caret to where the signature will be. Then select “Signature” from the main menu to open the “Welcom to Penpower Signature Tool” screen, and enter in signature mode. Please refer to Chapter 4.4.4 for details.

### 5.6.3 On-Line Translator

Select “On-Line Translat” from the main menu to open the On-Line Translat function. Select again to close the function. Please refer to Chapter 4.5.5 for details.

## 5.6.4 Settings


In Penpower RF Jr. menu select “Settings” to open the settings page. You can configure the recognition engine, output format or writing tracks here. For more details on PenPower settings please refer to the explanation provided in Chapter 4.6. The only difference is that in Traditional mode the writing pad display can be configured here.

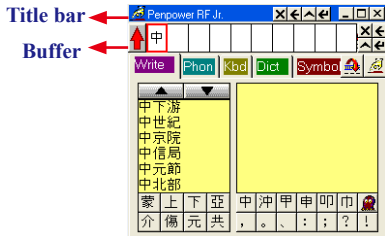
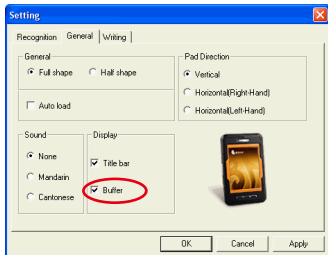
Please switch to the “General” setting page and in the “Display” area you can choose whether to display the window title and the buffer area.

### Title Bar

Show/hide the caption of writing-pad.

### Buffer

Show/hide the text buffer of Writing-pad. If the buffer is displayed, all the recognition result would be put here. After the buffer is full, the first character would be popped out into the caret. You can also click  button to force all the result popped out and clear the buffer anytime. If the buffer is hidden, the recognition result will be send to the caret directly.



## 5.6.5 Switch Version

Open the main menu. Select “Version...”. There are three Versions for Choose. Please see Chapter 4.7.1 for more details.

## 5.6.6 Gesture

Penpower RF Jr. handwriting system support four standard inking gesture. You can handwriting these gestures to simulate keyboard input. Please see Chapter 4.7.2 for details.

## 5.6.7 Mix Traditional and Simplified Writing

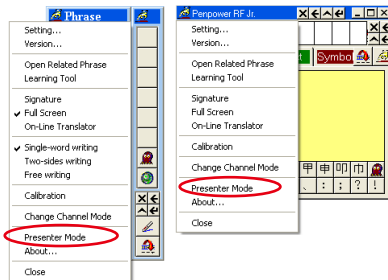
You can mix writing traditional and simplified Chinese characters. Whatever you wrote, choose different recognition engine to decide the results being traditional or simplified characters. Please see Chapter 4.7.3 for details.

## 5.6.8 Using Penpower RF Jr. in MSN Messenger

In the MSN Messenger 6.1 or higher version, you can use Penpower RF Jr. to input or draw in MSN. Please refer to Chapter 4.7.4 for details.

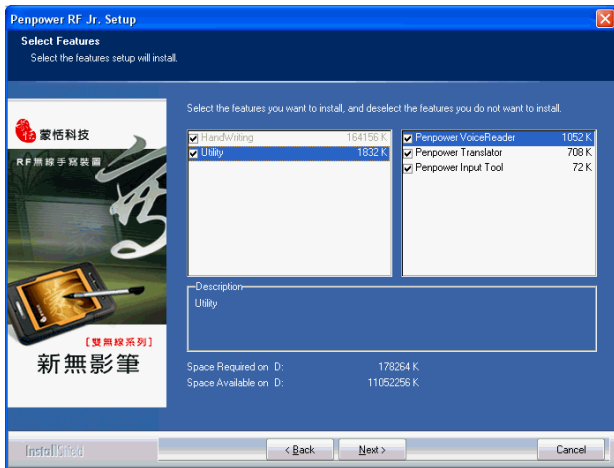
## 5.7 Presenter Mode

Click the menu and select “Presenter mode” to switch to the Presenter mode. Please refer to Chapter 4.8 for details.



## Chapter 6 Assistant Tools

If you selected the ‘Typical’ or ‘Custom’ type during the installation, you will find Penpower VoiceReader, Penpower Translator and Penpower Input Tool. In the Custom type, you could select the functions to install.




## 6.1 Penpower VoiceReader


Integrate the Text to Speech (TTS) technology to read aloud the Chinese article content within any window.

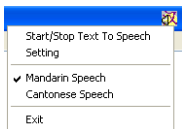
### 6.1.1 Use Penpower VoiceReader



1. Run “Start/All Programs/Penpower Jr/Penpower VoiceReader”.

*Note: Before run Penpower VoiceReader, please launch Penpower Junior first or the system will prompt you to do so.*

2. After VoiceReader is executed, the small icon  would be displayed on the right top corner of any application.


3. Select one paragraph of text, click , and then select “Start/Stop Text To Speech”. The selected text will be read aloud. You can choose Mandarin or Cantonese tone pronunciation from the menu.

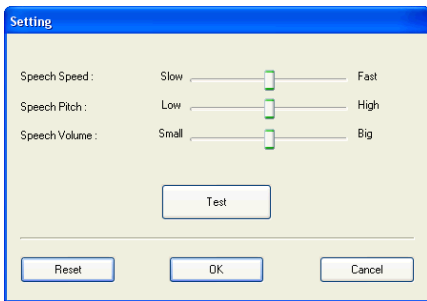


4. You can click , and select “Start/Stop Text To Speech” again to stop reading.
5. Click , select “Exit” to exit the Penpower VoiceReader.



## 6.1.2 Reading Setting

1. Click  , select “Setting” to open the setting dialog.  
Speech Speed : Adjust the speed of reading.  
Speech Pitch : Adjust the tone of reading.  
Speech Volume : Adjust the volume of reading.



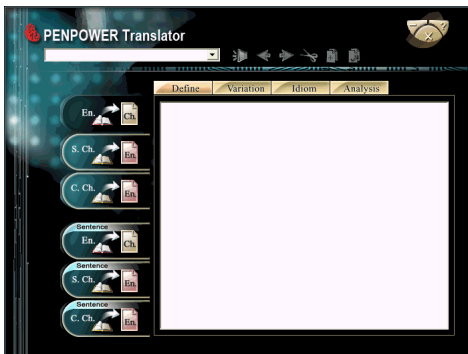


## 6.2 Penpower Translator

This is a word translator of Chinese to English or English to Chinese, and sentence translator of English to Chinese.

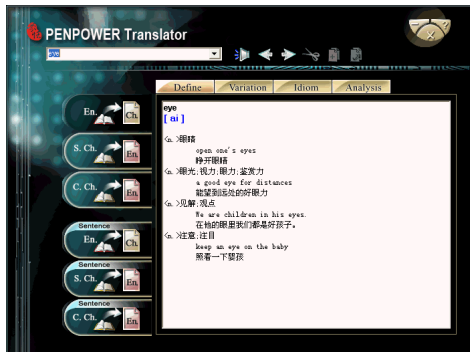
Run “Start/All Programs/Penpower Jr/Penpower Translator”.

*Note: Before run Penpower Translator, please launch Penpower Junior first or the system will prompt you to do so.*



### 6.2.1 English Words

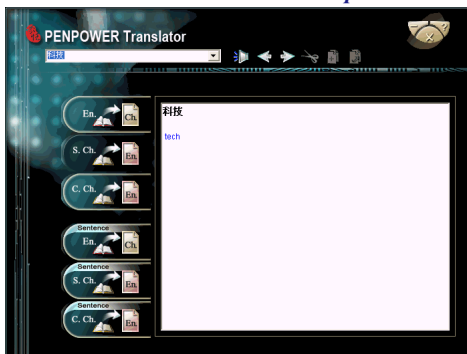
1. Click the button “En. Ch.” on the left.
2. In the input frame on the upper left corner, enter an English word, hit Enter to see all the Chinese explanation.
3. Choose different tabs to look up English word Define, Variation, Idiom and Analysis.



## 6.2.2 Chinese Characters


1. Click the button “S.Ch. En.” on the left.
2. In the input frame on the upper left corner, input a Chinese character or phrase, and then hit Enter to see the English explanation.

*Tip: If the Chinese word you wish to look up is Traditional Chinese, please select the “C. Ch. En.” translation option.*






## 6.2.3 English Chinese Article Translator

1. Click the button “Sentence En. Ch.” translation on the left.
2. In the top input frame, input an English article, click the  button to start translation. The translation result is shown in the lower input frame.

*Tip: When you translate a whole article, make sure there's a period mark at the end of each sentence. It will increase the accuracy of translation.*




## 6.2.4 Chinese English Article Translator

1. Click the button “Sentence S. Ch.En.” translation on the left.
2. In the top input frame, input an Chinese article, click the  button to start translation. The translation result is shown in the lower input frame.

*Tip: If the Chinese sentence you wish to look up is Traditional Chinese, please select the “Sentence C. Ch. En.” translation option.*



Press the Speech  button. If looking up a single character or word, the system will provide its Chinese or English pronunciation. If translating the entire text, it will read all of the content in the current input window.

The other buttons on the translator interface have the following functions:



: Previous/Next: look up the definitions for nearby words.



: Cut: cut the selected content. (Only available when translating an entire sentence)



: Copy: copy the selected content.



: Paste: paste the cut or copied content. (Only available when translating an entire sentence)



: Delete: delete all input and translation content. (Only available when translating an entire sentence)



: Save: press this button to open the “Save as...” dialogue window. This will save all of the input and translated content into a new \*.txt format file. (Only available when translating an entire sentence.)

When looking up a single word, you do not need to enter the entire text string. If the word you wish to look up shows up in the list, use the direction keys to select that word as the input then press Enter to look up that word.

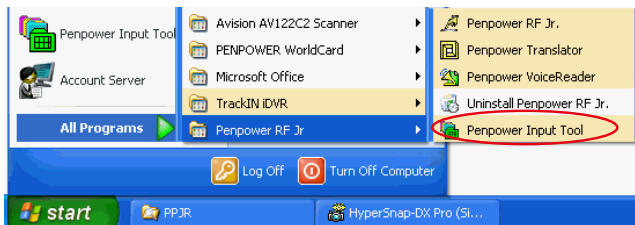


## 6.3 Penpower Input Tool

The New Pen mode provides Penpower Input Tool. In the Traditional mode, this function includes in the Writing-Pad.

There are four input tools in Writing-Pad: Phonetic, Keyboard, Dictionary and Symbol. Run “Start/All Programs/Penpower Jr/Penpower Input Tool.”

*Note: You need to run the Penpower RF Jr. before run the Penpower Input Tool.*

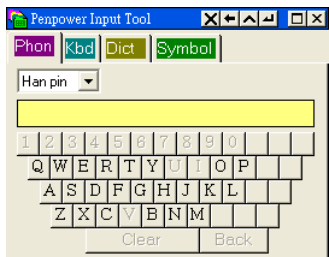
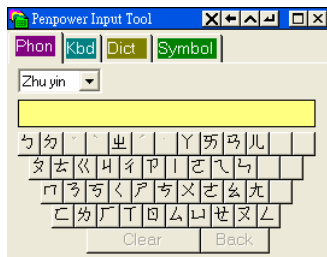



### 6.3.1 Phonetic Input Tool

There are three types of phonetic input tool, Zhu yin, Yue pin and Han pin by default. You can create your own phonetic input tool.

#### How to Use

1. Select one phonetic input tool of Zhu yin, Yue pin or Han pin.
2. Click the phonetic button one by one in order.
3. The converted candidate character would be listed in the text buffer.



*Tip: The writing-pad adopts shrink-expand user interface. It would expand into normal size when the cursor move on it. Otherwise it will shrink as an small icon  to avoid occupying the screen.*

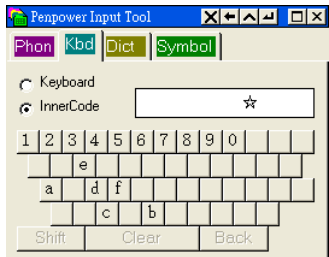
## 6.3.2 Keyboard Input Tool

### Keyboard

Simulated software keyboard.

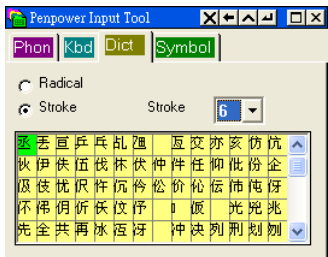
### Inner Code

For example, the inner code of [☆] in hexadecimal is a1b8. Click [a], [1], [b], [8] button one by one in order, and then get [☆]

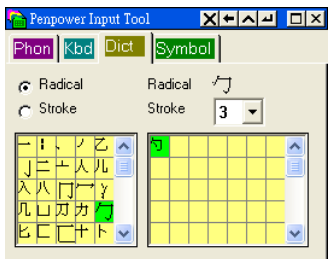


### 6.3.3 Dictionary Input Tool

#### Query by stroke

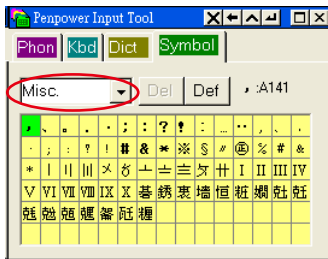


#### Query by radical



### 6.3.4 Symbol Input Tool

The special symbols are grouped into multiple pages of table. Select the suitable table and click the symbol what you want to get. It allows you to customize the symbol tables.





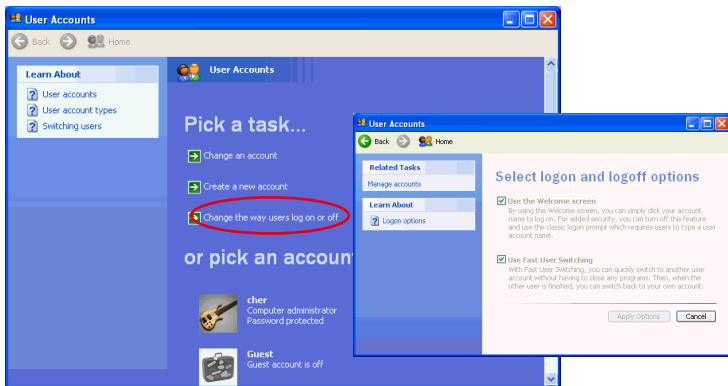
## Chapter 7 Fast User Switching

Penpower RF Jr. supports Fast User Switching capability when you have more than one user account in the PC with Windows OS. Penpower RF Jr. allows all the users can use it without reinstalling in each account.

For example, in the Windows XP OS. Open user account manager page from “Start/ Settings/Control Panel/User Accounts”. Click on “Change the way users log on or off” to open the “Select logon and logoff options” page.

Please select “Use the Welcome screen” and “Use Fast User Switching” options, then click “Apply Options”.

Whatever account is used to login the functions of Penpower RF Jr. would work.







# **Penpower RF Jr. V7.1 User Manual**

Penpower Technology LTD.

Release: November, 2009