

# **PenPower Junior(AI Dictation Version) User Manual**

Version: v1.0

Publication Date: May 2026

# PenPower Software End User License Agreement

This License Agreement (“Agreement”) is a legal agreement between you and PenPower Technology Ltd. (“PenPower”) granting you the right to use this software program (“Software”). If you do not agree to any terms of this Agreement, do not install, copy, or use the Software. By using the Software, you acknowledge that you have read, understood, and agreed to be bound by the terms of this Agreement.

## 1. Intellectual Property Rights

All intellectual property rights in the Software and the accompanying materials and documentation (including but not limited to copyrights) are owned by PenPower or are legally licensed to PenPower, and are protected by applicable laws and regulations.

## 2. License Grant

You are granted a non-exclusive license to use the Software on a single device only. You may not use the Software on more than one device simultaneously.

## 3. Copy Restrictions

The Software and its accompanying documentation are the property of PenPower and are protected by copyright laws. You are permitted to make one (1) copy of the Software solely for backup purposes. All other copying is strictly prohibited. The backup copy may not be used simultaneously with the Software.

You may not sell, lease, disassemble, reverse engineer, decompile, copy, translate, modify, create derivative works from, or otherwise attempt to obtain the source code of the Software, nor use the Software for any purpose not expressly permitted under this Agreement.

## 4. Enterprise Use

If the Software is to be installed on more than one device, additional licenses must be obtained from PenPower or its authorized distributors.

## 5. Privacy Policy

This Privacy Policy explains what personal data PenPower collects, how PenPower and its partners use such data, and the tracking technologies that may be employed. When you use PenPower’s website or applications, PenPower collects your personal data to improve service quality. PenPower reserves the right to modify this Privacy Policy at any time. Any updates will be published on the website or app download page and shall take effect immediately upon publication.

Data Collected by PenPower:

a. Automatically Collected Data:

When you visit PenPower's website or use its applications, PenPower may automatically collect and record information about your computer or mobile device and your activities, including but not limited to:

IP address

Device information (such as model, browser, operating system)

Preferences and settings (such as time zone and language)

Unique device identifiers

Geographic location (if permitted by the user)

Usage data, including time of access and features used

b. User-Provided Data:

To access certain services or promotional offers, you may choose to create an account and provide personal information such as:

Name

Product information or serial number

Email address

Phone number

You may choose not to provide personal information; however, this may limit your access to certain services.

Use of Personal Information:

PenPower uses collected data to:

Improve service quality

Provide personalized services

Offer promotions and discounts

Understand user behavior

Diagnose and fix issues

Deliver relevant advertisements

a. Email Address:

Used for account registration, confirmation messages, service notifications, and customer support responses.

b. Phone Number:

Used only for sending requested SMS messages.

c. Advertising:

Advertising partners may use tracking technologies to collect information about user activity (such as browsing and searches) to deliver targeted advertisements.

d. Legal Requirements:

PenPower may disclose user information to:

Respond to legal requests (e.g., subpoenas, court orders)

Comply with applicable laws

Investigate illegal activities

Protect the rights and safety of PenPower, its users, and its services

Enforce legal claims

User data may also be transferred in the event of corporate restructuring, such as mergers or acquisitions.

e. Mobile Device IDs:

PenPower may use device identifiers instead of cookies to identify users.

f. Applications:

Use of PenPower mobile applications is subject to the respective app license agreements.

## **6. Indemnification**

You agree to indemnify and hold PenPower harmless from any losses, costs, liabilities, settlements, or expenses (including reasonable attorney fees) arising from your violation of this Agreement.

## **7. Third-Party Services**

The Software may allow access to third-party content, applications, and data services (“Third-Party Services”). Your use of such services is governed by the terms and conditions of the respective third parties and applicable copyright laws.

Third-Party Services are not owned or provided by PenPower. PenPower does not control, endorse, or assume responsibility for any Third-Party Services. Any agreements between you and third parties, including privacy policies, payment terms, and service conditions, are solely between you and the third party. You assume all risks associated with the use of Third-Party Services.

## **8. Disclaimer of Warranties**

The performance of software depends on hardware and system environments. Although the Software has undergone rigorous development and testing, PenPower cannot guarantee compatibility with all environments.

To the maximum extent permitted by law, the Software and any support services are provided “as is” without warranties of any kind. PenPower disclaims all warranties, whether express or implied.

PenPower shall not be liable for any indirect, incidental, special, or consequential damages, including but not limited to loss of profits, loss of goodwill, business interruption, system failure, or other commercial damages.

## **9. Limitation of Liability**

Notwithstanding any damages you may incur, PenPower’s total liability under this Agreement shall be limited to the amount you paid for the Software.

Even if PenPower has been advised of the possibility of such damages, PenPower shall not be liable for them.

## **10. No Assignment**

You may not assign, transfer, or sublicense your rights under this Agreement to any third party.

## **11. Governing Jurisdiction**

Any disputes arising from this Agreement shall be subject to the jurisdiction of the court located in the place where PenPower is registered.

## **12. Miscellaneous**

If any provision of this Agreement is held to be invalid or unenforceable, the remaining provisions shall remain in full force and effect.

# Index

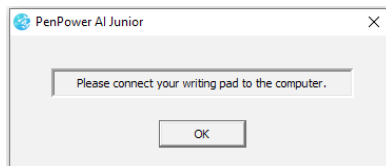
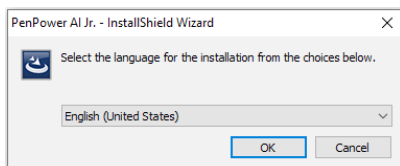
<b>Chapter 1 Getting Started</b> .....	<b>1-1</b>
1.1 Software Installation .....	1-1
1.2 Calibrating the Handwriting Pad .....	1-3
1.3 Auto Launch on Startup .....	1-4
<b>Chapter 2 Getting Started</b> .....	<b>2-1</b>
2.1 Software Interface Overview .....	2-1
2.2 Dictation Function Overview .....	2-1
2.3 Writing Mode Overview .....	2-5
2.3.1 Full Screen Writing .....	2-5
2.3.2 Writing Pad .....	2-7
2.4 Pen Gesture Commands.....	2-8
<b>Chapter 3 Input Tools</b> .....	<b>3-1</b>
3.1 Zhuyin (Bopomofo) Keyboard .....	3-1
3.2 English Keyboard .....	3-1
3.3 Pinyin Keyboard .....	3-2
3.4 Numeric and Symbol Keyboard .....	3-2
<b>Chapter 4 Settings</b> .....	<b>4-1</b>
4.1 General Settings.....	4-1
4.2 Chinese Output Settings .....	4-2
4.3 Recognition Settings.....	4-3
4.4 Writing Settings .....	4-4
4.5 Handwriting Tablet Settings .....	4-6
4.6 Update Settings.....	4-8
<b>Chapter 5 Learning Strings / Custom Dictionary / Artificial Intelligence / PenPower AI Assistant</b> .....	<b>5-1</b>
5.1 Learning Strings .....	5-1
5.2 Custom Dictionary.....	5-3
5.3 Artificial Intelligence.....	5-4
5.4 PenPower AI Assistant.....	5-5
<b>Chapter 6 Signature</b> .....	<b>6-1</b>
<b>Chapter 7 Data Management</b> .....	<b>7-1</b>

At the time this product was manufactured and packaged, the software may have already been updated to a newer version. If the software interface does not match the content of this user manual, please refer to the latest interface after installation.

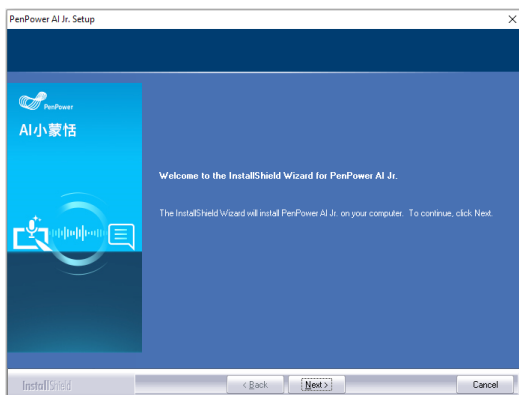
# Chapter 1 Getting Started

## 1.1 Software Installation

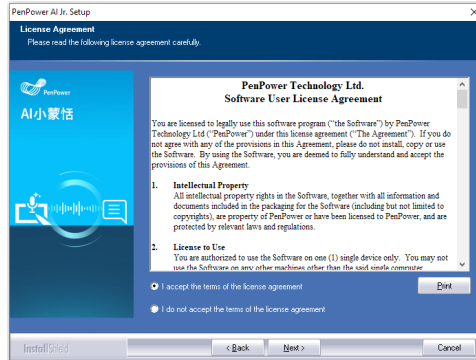
1. Please visit the link below to download the AI PenPower software:  
<https://d.penpower.net/aijr>
2. Next, select the software language you wish to use, such as [Chinese (Traditional)], and click [OK]. The software will then prompt you to connect the PenPower handwriting pad. Please plug the USB connector of the handwriting pad into a USB port on your computer, then click [OK] to continue.



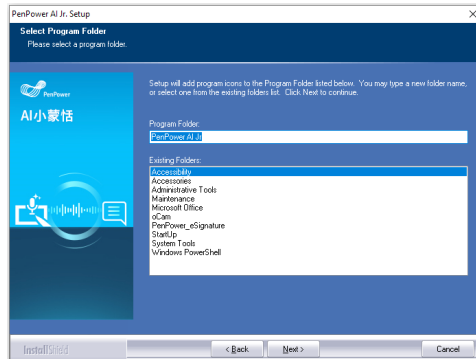
3. Click Next to proceed.



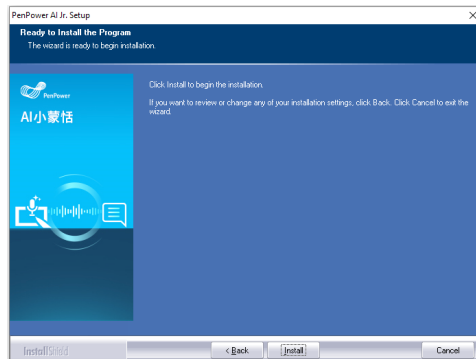
4. Please carefully read the license agreement, select [I accept the terms of the license agreement], and then click [Next].

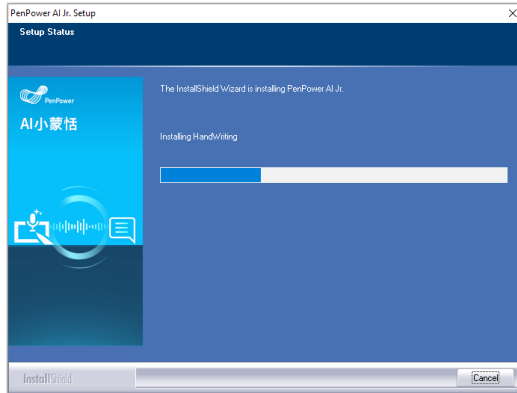


5. If you would like to change the installation directory, you may do so here. Otherwise, click [Next].

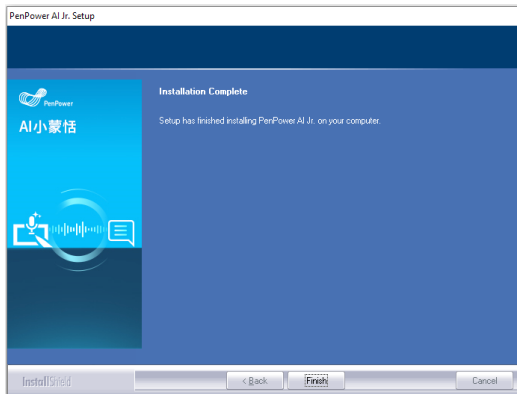


6. Click [Install] to begin the installation immediately






7. After the installation is complete, click [Finish] to exit the setup.

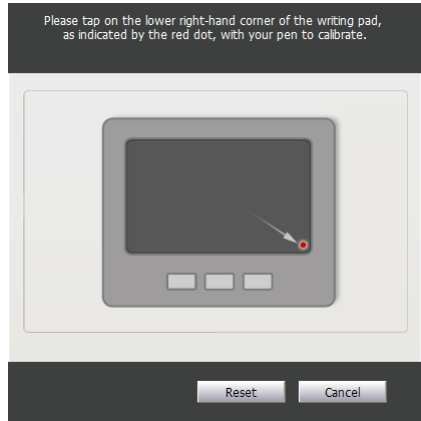
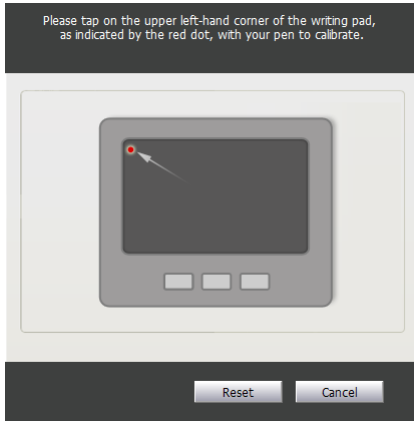


## 1.2 Calibrating the Handwriting Pad

After installation, click the desktop shortcut  to launch the PenPower software and follow the on-screen instructions to calibrate the handwriting pad. This helps prevent any offset between the pen input and the displayed position on the screen.

First, use the stylus to tap the upper-left corner of the handwriting pad, as indicated by the red dot on the screen. Once successful, the red dot will move to the lower-right corner. Then, use the stylus to tap the lower-left corner of the handwriting pad to com-

plete the calibration. ◦



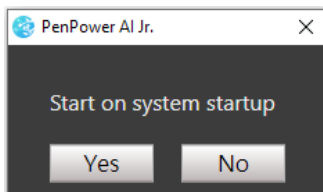
*Tip:*

1. *If the tap position is incorrect, you can click Reset and perform the calibration again.*
2. *The calibration settings take effect immediately after completion. There is no need to restart your computer or relaunch the software.*

## 1.3 Auto Launch on Startup

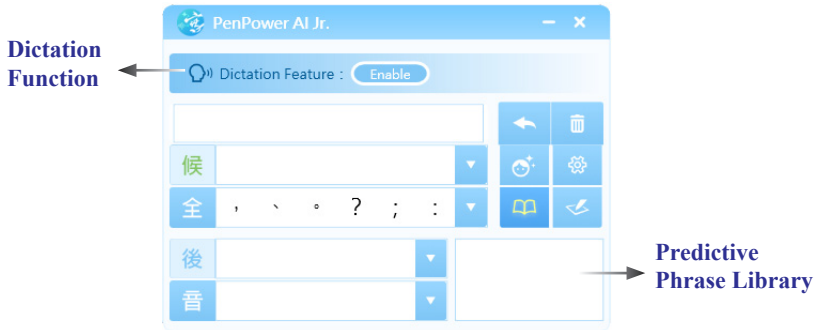
After successful calibration, you will be asked whether to automatically launch the PenPower software each time Windows starts. If not needed, select [No].

If you select [Yes], please ensure that the handwriting pad remains connected to the computer at all times. Otherwise, the software may not detect the device during startup and could result in an error.



## Chapter 2 Getting Started

### 2.1 Software Interface Overview



候 : Candidate Character Area

全 \ 半 : Full-width/Half-width  
Common Symbols

後 : Related Characters Area

音 : Homophone Area

🗣️ : PenPower AI Assistant


⚙️ : Open Function Menu

📖 \ 📖 : Show/Hide Related Characters,  
Homophones, and Predictive Phrase Library

📝 \ 📝 : Show/Hide Writing Pad

### 2.2 Dictation Function Overview

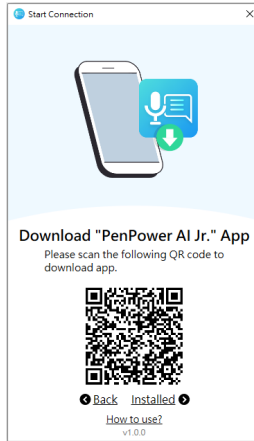
The PenPower software provides a [Dictation Function]. By installing a dedicated mobile app, you can input speech in real time into your computer.

1. Click the  button to enable the dictation function.
2. When using for the first time, please find the “Dictation Function Activation Instructions” card in the product box to obtain the activation code.
3. Enter the activation code, along with your email address or phone number, in the software and click [Register Now]. Once “Registration Successful” is displayed, you can start using the dictation function.



- **Step 2: Install the AI PenPower App**

On your Android or iOS device, open the built-in camera app and scan the installation QR code displayed on the screen. You will be redirected to the app store, where you can download and install the AI PenPower app.





**Reminder:** If the screen does not automatically redirect to the connection QR code, please click the **Installed** button to access it manually.

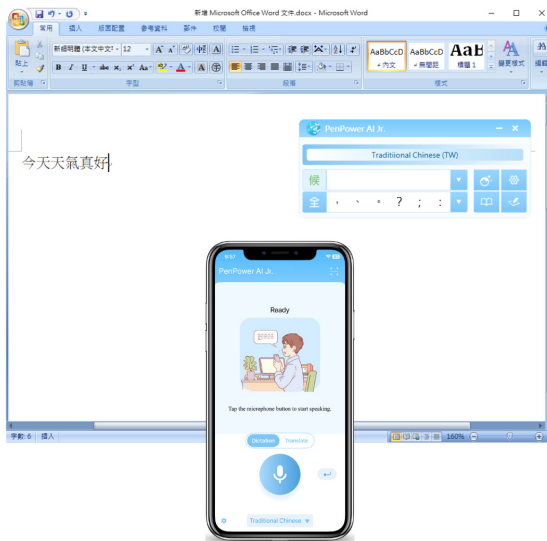
- **Step 3: Connect Mobile Phone and Computer**

Open the AI PenPower app on your mobile device and use the in-app scanning function to scan the connection QR code displayed on the screen. When the message “Ready” appears in the mobile app, the connection is successful and you can begin using the features.



## 5. Start Voice Input

- (1) Ensure that the AI PenPower mobile app is successfully connected to the computer software, and open a text editing application (e.g., Microsoft Word). Place the cursor in the input area.
- (2) In the mobile app, select either [Dictation] or [Translation] mode, and set the desired recognition or translation language. Tap the  (microphone) button to begin speaking into your phone's microphone. Speech will be converted into text in real time and temporarily displayed on the computer screen.
- (3) Tap the  (microphone) button again to stop voice input. After processing, the system will apply AI correction or translation and automatically send the result to the text editor.
- (4) If you need to modify the recognized text, you can rewrite it using the handwriting tablet.



## 2.3 Writing Mode Overview

The PenPower software provides two writing modes: [Full Screen] and [Writing Pad].

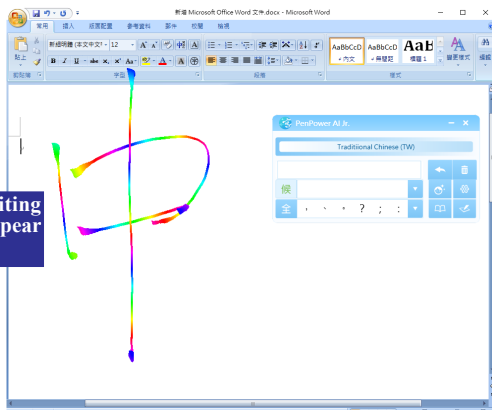
### 2.3.1 Full Screen Writing

After launching the PenPower software, you will see the default [Full Screen] writing mode. Open the document editing application where you want to input text, such as Microsoft Word, and place the cursor at the desired insertion point. You can then write directly on the handwriting pad.

While writing, your handwriting will appear simultaneously on the screen. Once recognized, the text will be sent to the cursor position in the document.

**Tips:** When writing, look at the screen instead of the handwriting pad. With a little practice, you will quickly get used to it. Neater handwriting results in better recognition accuracy. Stroke order may also affect recognition; if the result is not ideal, try writing with a different stroke order.

Write directly on the handwriting tablet, and your strokes will appear on the screen.

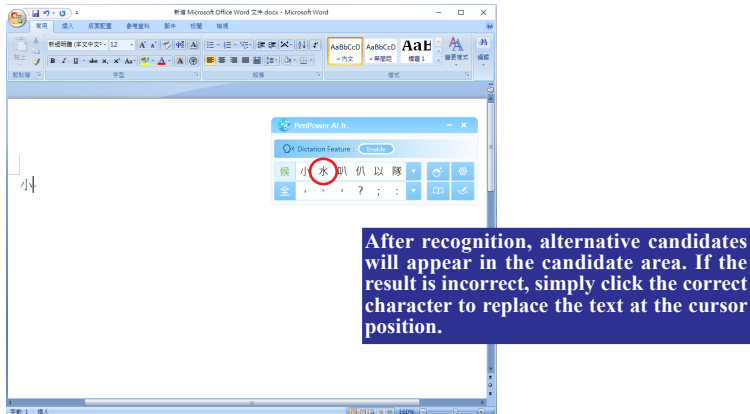


**Note:** The default writing mode is single-character input, meaning only one character can be written at a time. Regardless of how far apart the strokes are, they will be combined and recognized as a single character. For more writing-related features and settings, please refer to Chapter 4.

### Candidate Characters

After writing a character, the [Candidate Characters] area will display other possible

matches. If the recognized character in the document is incorrect but the correct one appears in the candidate list, simply click the correct character to replace the one at the cursor position



### **Predictive Phrase List**

The [Predictive Phrase List] displays commonly used multi-character phrases related to the character you wrote. Click a phrase with the mouse to insert it quickly.

### **Following Related Characters**

The [Following Related Characters] section lists two-character phrases that begin with the character you wrote. Click a phrase to insert it quickly. After selection, new related phrases will be generated based on the chosen character, allowing you to reduce the amount of writing needed.


### **Homophones**

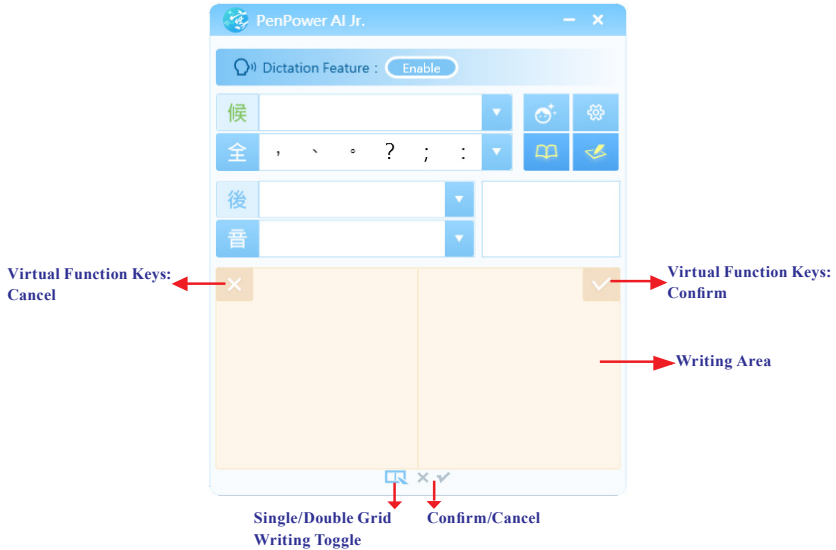
The [Homophones] feature is useful when you forget how to write a character or when it has too many strokes. You can write a simpler homophonic character and then select the correct one from the list.

For example, the character “壹” has many strokes, so you can write “一” and then select “壹” from the homophones list.

In addition, for commonly used symbols, you can switch between full-width and half-width symbols and click to insert them.

### 2.3.2 Writing Pad

If you prefer not to use full-screen writing, you can switch to the [Writing Pad] mode. Click [Writing Pad]  on the main interface to activate it, and write directly within the handwriting area on the pad. Your handwriting will appear in the writing pad window.




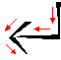

Similar to full-screen writing, the writing pad will automatically perform handwriting recognition shortly after you lift the pen. If you prefer to write slowly stroke by stroke, refer to Section 4.4 and set the pen-lift waiting time to [Infinite Writing]. In Infinite Writing mode, after finishing a character, you can click the [Confirm/Cancel] icon at the bottom of the writing pad to trigger recognition or clear and rewrite. Alternatively, you can use the stylus to tap the top-right or top-left corner of the handwriting area to activate the corresponding virtual function for recognition or clearing. The writing pad also supports continuous left-right writing. Click the [Single/Double Grid Toggle] icon at the bottom to split the writing pad into two sections. After writing a character in the left section, you can immediately write the next character in the right section without pressing the [Confirm] icon. The character in the left section will be recognized and sent automatically, allowing for faster alternating input.


## 2.4 Pen Gesture Commands

PenPower provides four standard pen gesture symbols to help you execute simple commands continuously while handwriting input. The writing methods are shown below:


1. Delete: Deletes the character after the cursor position. 

2. Backspace: Deletes the character before the cursor position. 

3. Enter: Inserts a line break at the cursor position.  or 

4. Space: Inserts a blank space at the cursor position. 

## Chapter 3 Input Tools

In addition to handwriting input, the PenPower software also provides [Input Tools] for text entry. Please click  [Function Menu] on the main screen and select [Input Tools] to open it.

### 3.1 Zhuyin (Bopomofo) Keyboard

On the Zhuyin keyboard page, candidate characters will appear after you click the phonetic symbols. In addition, phonetic symbols that are no longer possible will gradually be shown in gray, making input faster and easier. After completing input, please select the desired candidate character to insert it.




### 3.2 English Keyboard


On the English keyboard page, simply click the letters to input and send them directly.



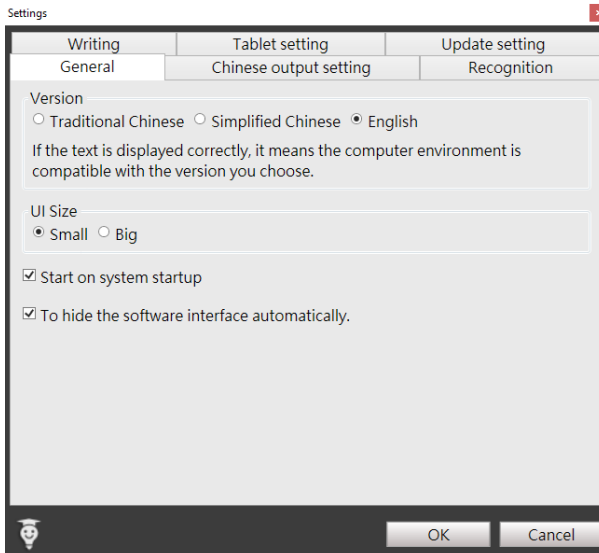


# Chapter 4 Settings

Please configure the PenPower software according to your personal handwriting needs. Click  [Function Menu] on the main screen and select [Settings].

**Tip:** In the lower-left corner of the settings page, there is a helper icon , then move the mouse over any function in the settings page to display a corresponding description tooltip. In addition, the battery status of your EZGo Wireless PenPower is shown nearby; when it turns red, it indicates that the battery is nearly depleted.

## 4.1 General Settings



### Version

If you wish to switch to a different software interface language, please select it here. When switching versions, a text prompt will appear below the option. If the text is not displayed correctly, it means your Windows system does not support that language.

### UI Size

If you need to adjust the software interface size, please select your preferred display size here.

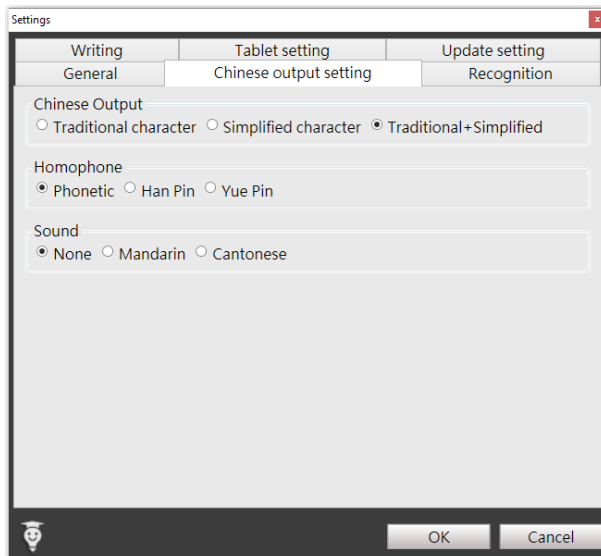
### Start on system startup

When enabled, the PenPower software will automatically run each time Windows starts. Please note that the dedicated receiver must remain connected to the computer at all times to prevent errors caused by the software failing to detect the handwriting tablet during startup.

### To hide the software interface automatically

When enabled, minimizing the software will not place it on the taskbar. Instead, it will remain as an icon docked on the side of the screen. You can click the icon to restore the interface.

## 4.2 Chinese Output Settings



### Chinese Output

Here you can set the output format of Chinese character recognition results as [Traditional character], [Simplified character], or [Traditional + Simplified].

- Traditional character: Regardless of whether you write in Traditional or Simplified

form, the recognition result will always be in Traditional Chinese.

- Simplified character: Regardless of whether you write in Traditional or Simplified form, the recognition result will always be in Simplified Chinese.
- Traditional + Simplified: Traditional writing is recognized as Traditional Chinese; Simplified writing is recognized as Simplified Chinese.

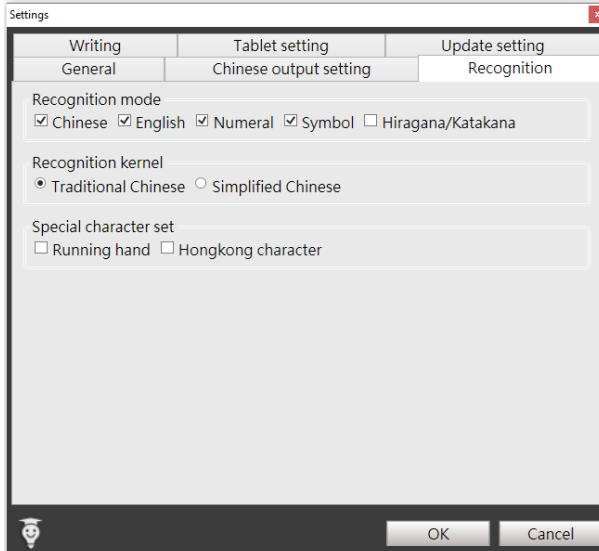
### **Homophones**

You can choose to display homophones after writing, based on [Phonetic], [Han Pin], and [Yue Pin] options.

### **Sound**

You can choose whether the recognized text is pronounced in Mandarin, Cantonese, or not spoken at all.

## **4.3 Recognition Settings**



### **Recognition Mode**

The software supports recognition modes including Chinese, English, numbers,

symbols, and Japanese (Hiragana/Katakana). You may select the modes according to your needs. The system will only recognize the selected character sets, so it is recommended to select only the required modes. For example, if you only write Chinese, do not select English or Japanese, as this can improve recognition accuracy.

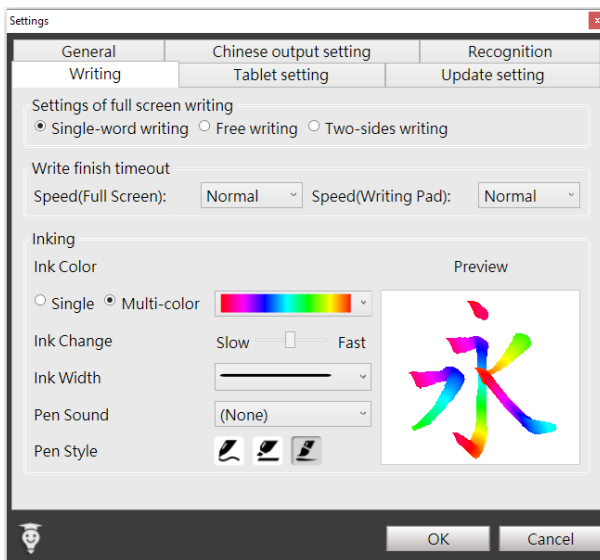
### **Recognition kernel**

When set to [Traditional Version], recognition of Traditional Chinese characters is stronger; conversely, Simplified Chinese recognition is stronger in the other setting. Please choose according to your needs.

### **Special Character Set**

Enabling the [Cursive Script Character Set] improves recognition of very cursive and connected handwriting. To recognize Hong Kong-specific characters, please select the [Hong Kong Characters] option.

## **4.4 Writing Settings**



### **Full Screen Writing Settings**

You can choose from three different writing modes: Single-Character Writing,

### Continuous Writing, and Left-Right Continuous Writing.

- **Single-Character Writing:** Only one character can be written at a time. Regardless of how far apart the strokes are, all strokes will be combined and recognized as a single character.
- **Continuous Writing:** You can write multiple characters continuously anywhere on the full screen. After you stop writing, the system will segment all strokes into individual characters, recognize them, and then send all results at once to the cursor position in the application. Please leave more space between characters to improve segmentation accuracy.
- **Left-Right Continuous Writing:** When you begin writing the first stroke, a dashed line will appear in the middle of the screen, dividing it into left and right sections. Please alternate writing between the left and right sides of the handwriting pad. All strokes appearing on the same side of the dashed line will be combined and recognized as one character.

**Note:** Max PenPower uses [Left-Right Continuous Writing] as the default mode.

When using Continuous Writing, keep the strokes of each character close together, and maintain proper spacing between characters. Avoid overlapping to ensure accurate segmentation. Cursive or connected handwriting is allowed, but be sure to follow the correct stroke order and complete all strokes of each character.

**Correct Writing Example:** For example, writing the three characters “明日月” .



**Incorrect Example 1:** The strokes of two adjacent characters overlap, making proper segmentation impossible, which may result in the system recognizing them as a single character.



**Incorrect Example 2:** The strokes of a single character are written too far apart, which may cause the system to split them and recognize them as two separate characters.



### **Intelligent Proofreading Recognition**

The system automatically corrects words and phrases based on the context of your

writing to improve recognition accuracy. For example, when you continuously write “夫下太平” instead of “天下太平”，the system may detect that the written character “夫” is similar in structure to the correct character “天”. Using dictionary-based correction, the system can intelligently replace the error and output the correct result “天下太平”.

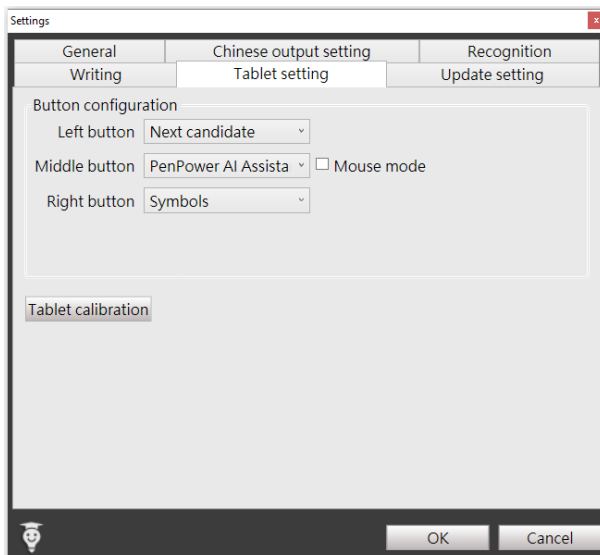
### **Write finish timeout**

This setting determines how long the system waits after you lift the pen before it considers the writing complete and performs recognition. A shorter setting means faster recognition, while a longer setting delays recognition. If you write slowly, you should set a longer delay. The Writing Pad also provides a [Unlimited Writing Time] option, allowing you to write freely without time limits.

### **Inking**

Here you can set the color, thickness, and other display properties of the on-screen strokes during writing. Please choose according to your preference.

## **4.5 Handwriting Tablet Settings**



### **Button configuration**

Here you can set the functions of the left, middle, and right buttons on the handwriting tablet. The dropdown options include: [Next Candidate],[Symbols],[Backspace],[Delete],[Next Line],[Tab],[Full/Half shape],[Input tool],[PenPower AI Assistant]

- Default function of Left Button: Next Candidate
- Default function of Middle Button: PenPower AI Assistant
- Default function of Right Button: Symbols

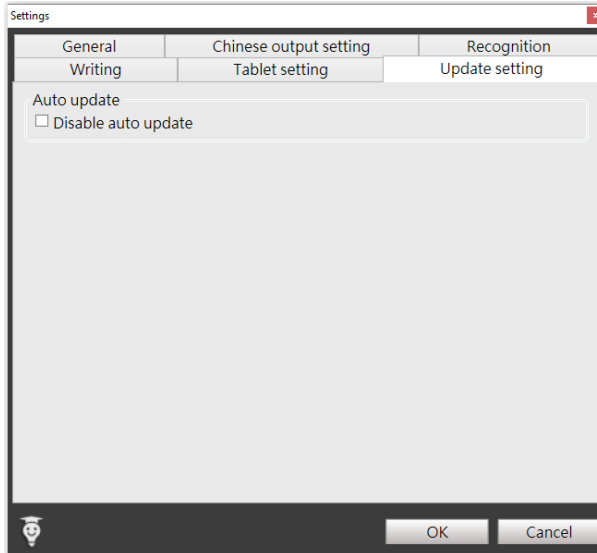
### **Handwriting Pad Virtual Button Function**

This feature is only supported on the [MAX PenPower] device. When enabled, you can use the stylus to directly tap the [Quick Edit Keys] and [Common Punctuation] areas on the MAX PenPower handwriting pad.

### **Calibrate Handwriting Pad**

Click this button to open the handwriting pad calibration screen. Please follow the on-screen instructions to complete the calibration.

## 4.6 Update Settings





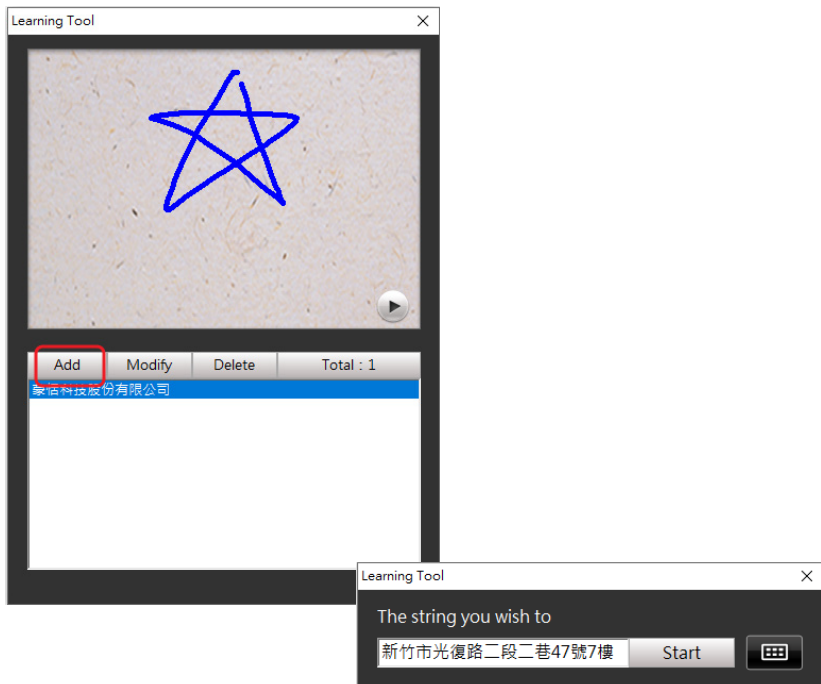
The PenPower software provides an automatic update feature. When a new version is released, the system will automatically download the update file. If you do not wish to receive notifications when software updates are available, please enable this option to turn off update reminders.

# Chapter 5 Learning Strings / Custom Dictionary / Artificial Intelligence / PenPower AI Assistant

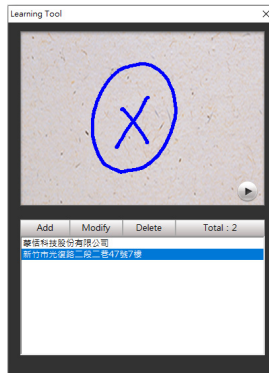
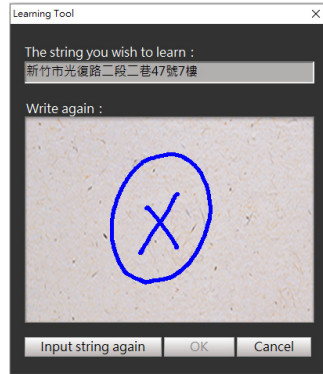
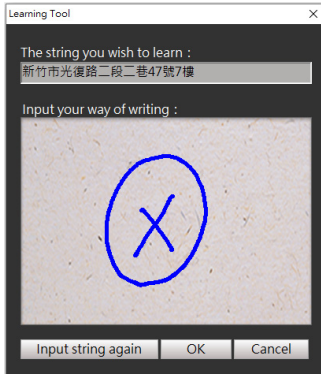
## 5.1 Learning Strings

The Learning Strings feature allows you to assign a simple symbol to represent an entire string of text. After setup, you only need to draw the symbol to input the corresponding text string, eliminating the need for lengthy writing.


1. Click  [Function Menu] on the main screen and select [Learning Strings].
2. After the page opens, click the [Add] button and use handwriting input or click  to open the input tool to enter the text string you want to create (for example, commonly used addresses). Then click the [Start Learning] button.





- Please draw an easy-to-remember symbol on the handwriting tablet and click the [Confirm] button. A prompt will appear asking you to draw the symbol again. Please draw the exact same symbol once more. Once the system recognizes it, the learning string will be successfully created.



**Note:** If the two strokes are different or too similar to an existing character, the system will display a learning failure message. Please try again or use a different design.

**Tip:** If you forget the stroke order of the symbol, you can click the icon  to play a stroke order animation.

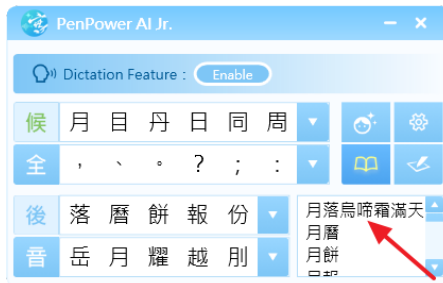
## 5.2 Custom Dictionary

1. Although the PenPower software already provides hundreds of thousands of words and phrases, you can still add your own entries using the Custom Dictionary feature to suit your personal needs and speed up input.
2. Click  [Function Menu] on the main screen and select [Custom Dictionary].
3. After the page opens, click the [Add Entry] button, then use handwriting input or open the input tool  to enter the phrase you want to create. Click [OK] to complete the process.




**Note:** A single entry can contain up to 200 Chinese characters.

4. Afterward, when you write the first character of the custom phrase (for example, “月”), the phrase will appear in the Predictive Phrase Library. You can simply click it to insert it into your document.



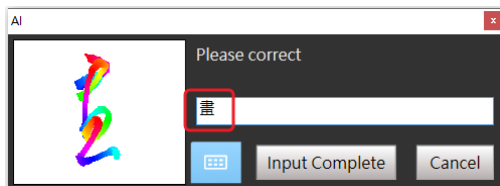
## 5.3 Artificial Intelligence

If there is a character that cannot be recognized no matter how you write it, and it does not appear in the candidate list, you can use the Artificial Intelligence feature to let the PenPower software learn your personal handwriting. The next time you write it in the same way, it will be recognized correctly, gradually improving recognition accuracy.

1. First, write the character that is not recognized well (for example, “畫”), then click  [Function Menu] on the main screen and select [Artificial Intelligence].


**Note: The Artificial Intelligence option is unavailable if no handwriting has been entered.**

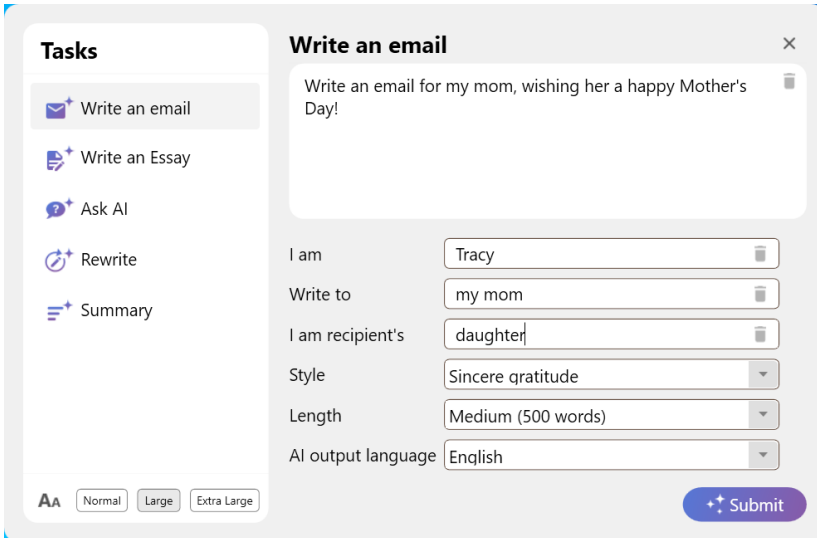
2. After the page opens, use handwriting input or the input tool to correct the misrecognized character to the correct one, then click [Finish Input] to complete the process.



3. Afterward, when you write the same character again in the same style, you will see that it can now be correctly recognized as “畫” .

## 5.4 PenPower AI Assistant

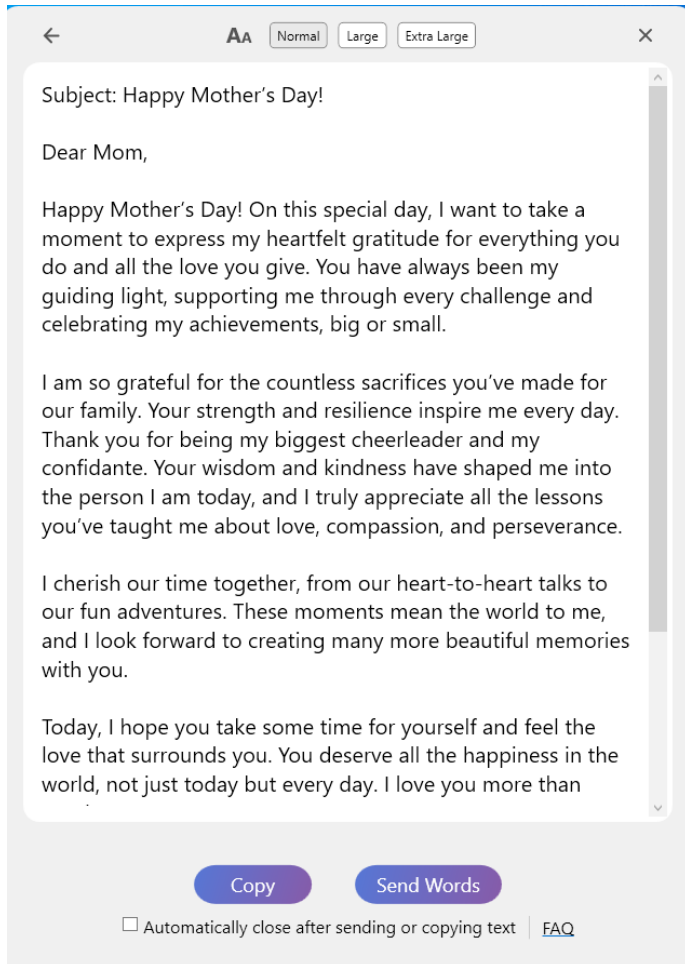
- The PenPower AI Assistant integrates powerful AI capabilities to help you easily write emails, compose articles, and ask questions.
- Click the [M] function key on the handwriting tablet, or press the [PenPower AI Assistant] button  on the software toolbar to launch the feature. It provides five task types: [Write Email], [Compose Article], [Ask AI], [Rewrite], and [Summarize]. You can choose the task according to your needs. The following example demonstrates how to use the Write Email function.
- First, select [Write Email] on the left side of the screen. On the right side, enter the email outline, signature, recipient's title, your relationship with the recipient, and choose the writing style, length, and AI output language. Then click the [Submit] button to send all input prompts to the AI for processing.



The screenshot shows the 'Write an email' interface. On the left, a 'Tasks' sidebar lists 'Write an email', 'Write an Essay', 'Ask AI', 'Rewrite', and 'Summary'. The 'Write an email' task is selected. Below the sidebar are text size options: 'AA', 'Normal', 'Large', and 'Extra Large'. The main area is titled 'Write an email' and contains a text input field with the prompt 'Write an email for my mom, wishing her a happy Mother's Day!'. Below this are several form fields: 'I am' (Tracy), 'Write to' (my mom), 'I am recipient's' (daughter), 'Style' (Sincere gratitude), 'Length' (Medium (500 words)), and 'AI output language' (English). A blue 'Submit' button is at the bottom right.

**Tip:** You can adjust the text size to large or extra-large at the bottom-left of the screen for easier operation and reading.

- After the AI processing is complete, the generated result will be displayed on the screen. You can open an application such as an email client and click the [Send] button to directly insert the generated text into the email, or click the [Copy] button to copy the text to the clipboard.




**Tips:**

- 1. You can also adjust the text size to large or extra-large at the top of the screen for better readability.**
- 2. Click the ← (Back) button at the top-left corner to return to the previous screen and modify the input prompts.**
- 3. Enable the [Automatically close after sending or copying text] option to automatically close the PenPower AI Assistant after clicking Send or Copy.**
- 4. Click the [FAQ] button to open the help webpage with instructions and common questions related to the PenPower AI Assistant.**

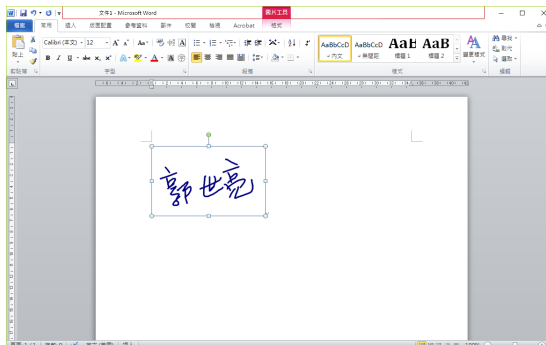
## Chapter 6 Signature

The PenPower software provides a simple signature function that allows you to convert your handwritten signature into an image and insert it into commonly used document editing applications.

1. First, open the document editor where you want to insert the signature (such as Microsoft Word), and place the cursor at the desired position.
2. Click [Function Menu]  on the main screen and select [Signature].




3. Before signing, you can adjust the pen color, thickness, and style in the options on the left. After setting your preferences, you can start signing on the handwriting tablet, and your signature will appear on the screen in real time.
4. After completing the signature, you can click [Preview] on the left to view it. If you are not satisfied, click [Clear] to rewrite it. If you are satisfied, click [Send] to insert the signature into the document editor.



## Chapter 7 Data Management

Each Windows user has their own handwriting data file, which includes Learning Strings, Artificial Intelligence data, and Custom Dictionary entries. If you want to use your data on another computer, please follow the steps below:

1. Click [Function Menu]  on the main screen and select [Data Management].
2. Select [Export] to export and save your personal handwriting data. If you are using the EZGo Wireless, you can export the data to the second partition of the dedicated receiver for easy portability.
3. Copy the handwriting data file to another computer, then select [Import] to choose and import the file, allowing you to continue using your data.



# **PenPower Junior(AI Dictation Version) User Manual**

Produced by: PenPower Technology Ltd.

Edition: May 2026